

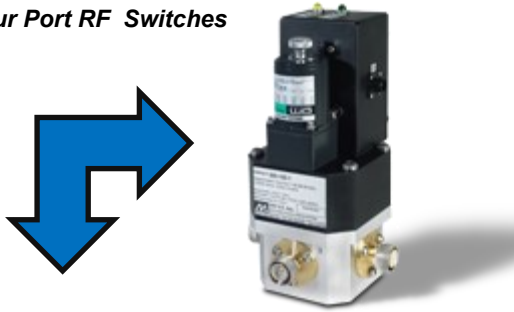
SWP-300 SITE CONTROLLER



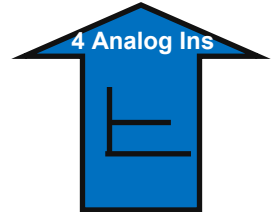
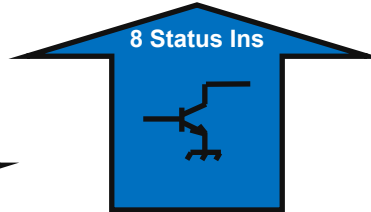
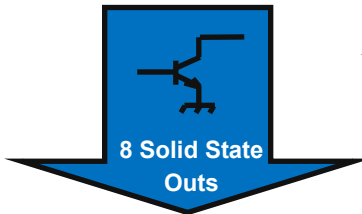
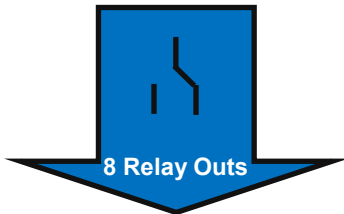
GUI Based RF Site Controller / Monitor With SNMP

Internet/Intranet communications—Free BDI Stack remote control software for Windows and Android operating systems, also supports SNMP

Direct Interface to most Four Port RF Switches



Direct Interface to all BDI DPS-100D Power Meters and Accessories



The SWP-300 Site Controller is a cost effective remote system for transmitter sites offering full sized remote capability in a compact package. What makes the SWP-300 so unique is that it is the only controller on the market with direct connection from 4 port switches AND the BDI DPS-100D True RMS power monitor series. Simple plug and play of all popular RF switches provides a hassle free installation. No more drudgery of interlock paths and steering. The SWP-300 does it all. In addition to these plug and play features the system also provides 16 command outputs—8 form C relays and 8 solid state command outputs. There are 8 status inputs and we even provided 4 analog voltage inputs for legacy equipment. If more I/O is required use the companion IOX-24 24 channel expander panel available as an option for the SWP-300 series. Control and monitor all functions via BDI's provided SWP-300 Windows software. The SWP-300 also supports Ethernet SNMPv2 as an SNMP agent.

The SWP-300 is designed specifically to address the most common RF site configuration—two transmitters switched to an output. Two models are available. The SWP-300-1T interfaces to one RF switch. The SWP-300-2T can handle two for Main/Alt. TX and Main/Alt. Antenna configurations. Automatic features are set up by simple menu changes. No complicated macros or configuration files to write or edit. Just simple selections at setup time. The SWP-300 series is part of a growing family of RF site support products from BDI. See our website for the complete RF support product line and our RF site centric audio products.

SWP-300 Technical Specifications

Independent Control Outputs:	16 total, 8—Form C Relays individually configurable for momentary or maintained closure. Relay contact rating: 2A. @ 120VAC/2A 24 VDC , 8—Solid State outputs individually configurable high or low output upon control activation. Solid State output rating: On current 500 mA Max. for low state output, 50 uA for high state output. Open collector output 12 VDC available for pullup. CMOS/TTL Compatible—Expandable to 48—40 relays and 8 solid state with optional IOX-24 Expander Panel
Independent Status Inputs:	8— Solid State inputs configurable for High or Low input. High input impedance: 3.00K ohms, Low input impedance: 1.8 ohms, Internal pullup to 5 VDC. CMOS/TTL Compatible –Expandable to 32 with optional IOX-24 Expander Panel
Analog Voltage Inputs:	4— Expandable to 12 with optional IOX-24 Expander Panel - single ended 0-5 VDC,
Motorized Switch Interface:	1 or 2 model dependent. Interface provides A/B position control and receives A/B position status back. Can source 12—24 VDC for control of switch. Optional switch interface cables for Delta, Dielectric, Dowkey, ERI, Myat, MCI, Spinner motorized switches available.
External Interlock Inputs:	2 load specific inputs per switch
AC Power Loss Input:	Prevents movement of RF switches in Automatic mode if power has been lost to transmitters
Dedicated Control Outputs	2— sets of TX ON/OFF command and Interlock control Form C relays for dedicated control of two transmitters. 1—TX Fault Form C relay—closes when an optional BDI DPS-100D power monitor is connected and indicates RF failure 1—VSWR Fault Form C relay—closes when an optional DPS-100D power monitor is connected and indicates a high VSWR condition
Dedicated Status Inputs:	2—TX On Status inputs for Main/Alt. transmitters, TX 1/TX 2 Selected to air—for use with motorized switches
Optional Input Sensors:	Up to 2 external temperature sensors connected to optional DPS-100D power meters Up to 2—transmission line pressure sensors 0-15 PSI indication in 1 pound increments, requires the connection to a DPS-100D power sensor
Optional Power Meter Inputs:	Up to two DPS-100D power monitors showing direct indication of all parameters available on a DPS-100D power monitor including Forward/Reflected Power, temperature, line pressure, 6 general purpose inputs from DPS-100D sensor inputs, external interlock and fault status

SWP-300 Technical Specifications Continued

Electrical Requirements:	100-240 VAC 50-60 Hertz @ 2A. EIC Power Entry Cord
Physical Specifications:	19" W X 10" D X 1.75" H—Standard EIA Rack Enclosure Mount
Environmental Requirements:	0-55 degrees C non condensing atmosphere
Shipping Carton Dimensions/Weight	22" L X 14" W X 7" H, 15 lbs.

Accessories Available for this Product

IOX-24—24 channel Expander panel provides 24 each Relay outs, status ins and 8 additional analog input channels

SWP OPTION #3 25 foot Interface Cable for Dielectric 50000 Series Motorized RF Switch

SWP OPTION #4 25 foot Interface Cable for Dielectric 600000 Series Motorized RF Switch

SWP OPTION #5 25 foot Interface Cable for Electronics Research, Inc. Motorized RF Switch

SWP OPTION #6 25 foot Interface Cable for Mega Industries/Micro Communications, Inc. Motorized Switch –Amphenol Style

SWP OPTION #7 25 foot Interface Cable for Myat, Inc. Motorized RF Switch

SWP OPTION #8 25 foot Interface Cable for Spinner GmBH Motorized Switch

SWP OPTION #9 25 foot Interface Cable for Delta Electronics Motorized Switch

SWP OPTION #18—Rohde & Schwarz, OPTION #19 Gatesair OPTION #20 Nautel, OPTION #21 Broadcast Electronics/Elenos Transmitter Interface Kits for 2—transmitters—can be interchanged—Call the factory for other transmitter manufacturers

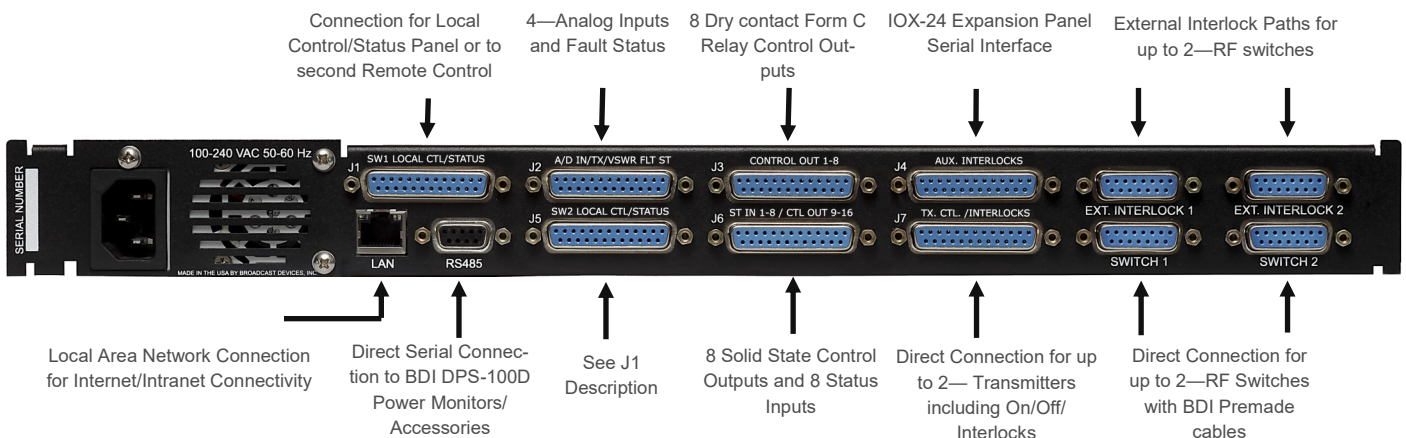
SWP OPTION # 14 DB25 to Terminal Strip Breakout Panel—Accommodates 3 DB 25 Connectors

SWP OPTION # 15 8 Lighted Pushbutton Panel for direct connection to J1/J5 to provide local breakout of control/status

DPS-100D Series True RMS RF Power Monitor—order by line size—SWP-300 accommodates up to 2—DPS-100D Meters

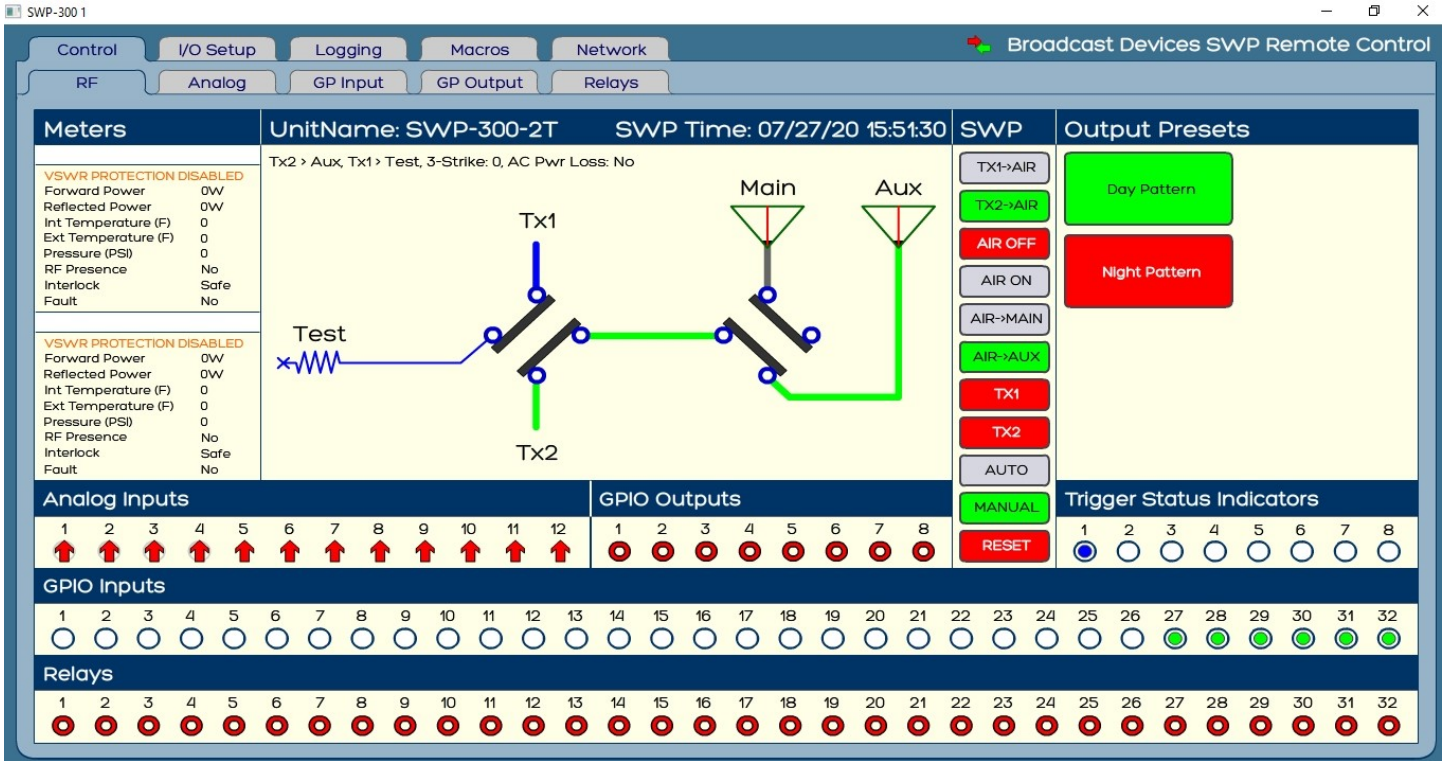
TMP-100 Temperature Sensor—Must be used with DPS-100D series True RMS RF Power Monitor

PSW-100 Pressure Sensor—Must be used with DPS-100D series True RMS RF Power Monitor



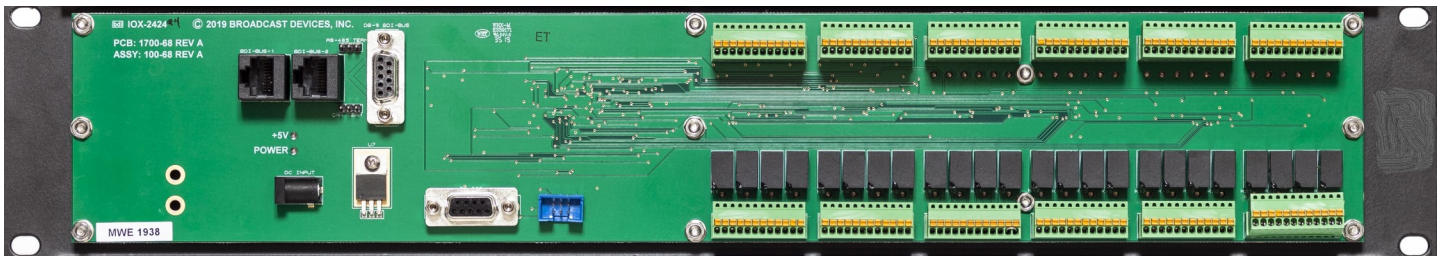
BDI Stack Graphical User Interface

The **BDI SWP-300 Graphical User Interface** provides complete status and control of the SWP-300 Site Controller. The BDI SWP-300 GUI can be custom configured for your site location and provides all pertinent information from your site including forward/reflected power, temperature and line pressure from connected BDI DPS-100D power meters, motorized switch positions and other site connected status inputs. The interface is provided free of charge and can be downloaded at www.broadcast-devices.com/



SWP-300-1T Dual Switch Controller Shown

Control and status of the 8—relays, 8—solid state outputs, 8—status inputs, 4—analog inputs, and up to 2—connected DPS-100D Power Meters data is displayed in one compact easy to read screen. Each control output and status input can be custom labeled for easy interpretation of data. Site specific name can be added as well. Need more I/O? Add the IOX-24 Expander panel which provides 24 additional relay outs, 24 additional status inputs and 8 additional analog inputs. All connections are removable 12 position plugs for easy removal for service or replacement if ever needed. Only 2 EIA rack units for compact installation and can be located up to 1000 feet away from the SWP-300 chassis.



The IOX-24 -24 channel Expander Panel

