

INTERCOM CONSOLE MODULE
ASSY 26/20 REV C COPYRIGHT 1998
BROADCAST TOOLS, INC.

BROADCAST[®] tools INC

Installation and Operation Manual



WURC-8 Plus *Web Enabled, Dial-up Eight Channel Site Remote Control System*

Manual Update: 11/5/2020

For firmware versions equal to or greater than X_V1.24 / P_V02.15 / P_V1.19

If you need a firmware upgrade, contact Broadcast Tools[®]

No part of this document may be reproduced or distributed without permission.
ALL SPECIFICATIONS AND FEATURES FOR THIS PRODUCT ARE SUBJECT TO
CHANGE WITHOUT NOTICE

NOTE: We recommend the use of Chrome, Firefox or Safari as your browser.

Due to the dynamic nature of product design, the information contained in this document is subject to change without notice. Broadcast Tools, Inc., assumes no responsibility for errors and/or omissions contained in this document. Revisions of this information or new editions may be issued to incorporate such changes.

*Broadcast Tools[®] is a registered trademark of Broadcast Tools, Inc.
All Sentinel[™] labeled products are a trademark of Broadcast Tools, Inc.
Copyright [®] 1989 - 2020 by Broadcast Tools, Inc. All rights reserved.
No part of this document may be reproduced or distributed without permission.*

Visit www.broadcasttools.com for important product update information.

Table of Contents

Section Title	Page #
Introduction	4
Safety Information	4
Who to Contact for Help	4
Product Overview	5
Inspection	6
Installation	6
Surge Protection	6
UPS Standby Power System	6
Front panel indicators and controls	7
Rear panel connections	8
Connecting your WVRC-8 Plus to external equipment	10
Power Failure input	10
“NET” RJ45 network connector	10
Silence Sensor input	10
Metering Inputs	10
Status/Logic Inputs	11
Control Relays	11
Temperature Probe input	11
12 VDC POWER connector	11
Web Setup/Operation	12
Ethernet “Quick Start” Guide	12
Opening the LOGIN Web Page	14
“Login” Web Page	15
“Monitor/Control” Web Page	16
“User Setup” Web Page	17
“I/O Setup” Web Page	18
“Metering” Setup page	19
“Temperature” Setup page	20
“Virtual Channels” Setup page	21
“Status” Setup page	22
“Relays” Setup page	23
“Silence Sensor” Setup page	25
“Power Failure” Setup page	26
“Chassis Temperature” Setup page	27
“Internet Down” Setup page	28
“Dial Settings” Setup page	29
“Scheduler” Setup page	31
“Macros” Setup page	35

WEBSITE:

Visit our web site for product updates and additional information.



CONTENTS

Table of Contents – cont'd

Section Title	Page #
Restoring to Factory Defaults	38
“Email/Network Setup” Web Page	39
“Show Alarms” Web Page	44
“About” Web Page	45
Dial-Up Operation	46
Using the Dial-Up Interface	46
Recording Voice Messages	48
Configure DIP Switch Settings	50
Specifications	51
Declaration of Conformity	52
Warranty	53
Front and rear chassis drawings	Appendix
Connection Suggestion	Appendix
Typical WVRC Product I/O	Appendix

WEBSITE:

Visit our web site for product updates and additional information.



INTRODUCTION

Thank you for your purchase of Broadcast Tools® WVRC-8 Plus Web enabled, Dial-up Eight Channel Site Remote Control System (referred to as the WVRC-8 Plus throughout this manual). We're confident that this product will give you many years of dependable service. This manual is intended to give you all the information needed to install and operate the Broadcast Tools® WVRC-8 Plus.

SAFETY INFORMATION

Only qualified personnel should install Broadcast Tools® products. Incorrect or inappropriate use and/or installation could result in a hazardous condition.

Broadcast Tools, Inc., is unable to support NON-Broadcast Tools software, hardware or NON-Broadcast Tools computer/hardware/software problems. If you experience these problems, please research your hardware/software instruction manuals or contact the manufacturers technical support department.

Only qualified technical personnel should install the WVRC-8 Plus. Any attempt to install this device by a person who is not technically qualified could result in a hazardous condition to the installer or other personnel, and/or damage to the WVRC-8 Plus or other equipment. Broadcast transmitters can operate at voltages that are potentially lethal. Please ensure that proper safety precautions have been made before installing this device. If you are unfamiliar with this type of equipment, please contact a properly qualified engineer to handle the installation and setup of the WVRC-8 Plus.

Broadcast Tools® Products, as with any electronic device, can fail without warning. Do not use this product in applications where a life threatening condition could result due to failure. Serious injury or death can occur if a command channel is activated while you are performing maintenance on your equipment. If you are performing maintenance on your equipment, you should press the "PGM" button on the front panel of your WVRC-8 Plus forcing the unit in to local mode. The "PGM" LED will illuminate. PGM mode prevents the unit from performing relay commands.

For additional safety, it is strongly recommended that, in addition to setting the WVRC-8 Plus in to "PGM" mode, the remote/local switch on any transmitter or high voltage equipment should also be set to local mode.

While the WVRC-8 Plus relays are physically capable of handling up to 250 VAC, this practice is extremely dangerous and should never be attempted. The removable euroblock screw terminals are not designed to shield humans from potentially dangerous voltages. Contact with high voltages can cause serious injury or death. The maximum recommended voltage for the WVRC-8 Plus is 1 amp at 30 V. Switching of high voltages should only be done external from the WVRC-8 Plus and in a manner that isolates the voltages from accidental contact with humans.

WHO TO CONTACT FOR HELP

If you have any questions regarding your product or you need assistance, please contact your distributor from whom you purchased this equipment.

If you would like more information about Broadcast Tools® products, you may reach us at:

Broadcast Tools, Inc.

131 State Street

Sedro-Woolley, WA 98284-1540 USA

Voice: 360.854.9559

Fax: 866.783.1742

Internet Home Page: www.broadcasttools.com

E-mail: support@broadcasttools.com

**THANK YOU FOR CHOOSING
BROADCAST TOOLS® BRAND PRODUCTS!**

Broadcast Tools is a Veteran Owned Business



Designed, Assembled and Supported in WA State, USA



CAUTION!

Broadcast Tools® Products, as with any electronic device, can fail without warning. Do not use this product in applications where a life threatening condition could result due to failure.



NOTE:

This manual should be read thoroughly before installation and operation.

WEBSITE:

Visit our web site for product updates and additional information.



INTRODUCTION

Product Overview

The WVRC-8 Plus provides a cost-effective, one rack-unit solution allowing dial-up recordable voice response and/or web-enabled control and monitoring via a web browser and/or smart phone. The WVRC-8 Plus was designed from a user's point of view, so all of the basic functionality you need is included to control and monitor your site equipment, while including the accessories other manufacturers consider optional. In addition, the WVRC-8 Plus may be programmed for dial-up operation via the web interface. The WVRC-8 Plus is supplied with spoken words and phrases in English, but the user is free to record words and phrases in their language. Each analog, status, silence sensor, temperature sensor and power failure input can be configured to dial-out and/or email up to eight individual phone numbers/email addresses, allowing different input alarms to be routed to different call-out numbers and/or email recipients. Event-driven and time-based automatic command capabilities, allows 50 user-defined macros to enable the WVRC-8 Plus to make corrective actions; 100-event program scheduler for relay control, DST correction, macro actions and alarm muting. Support for basic SMTP authentication as well as SNMP.

Features/Benefits

- NTP time base and/or battery-backed real time clock/calendar with accurately better than ± 2.0 minutes per year.*
- Four "Virtual" metering channels.*
- 1/8" T/R/S temperature probe port allowing Fahrenheit or Celsius temperature monitoring within the range of -67°F to +257°F (-55°C TO +125°C).*
- Internal temperature monitor.*
- Jack for external power failure power supply.*
- Stereo Silence Sensor monitoring with remote telco monitoring.*
- Internet Down alarm feature which will allow voice alarms when internet connection or DNS is lost.
- Front panel microphone for remote aural site monitoring via phone.*
- Simple telco hybrid with send and caller balanced audio I/O.*
- Event-driven and time-based automatic command capabilities. This allows user-defined macros to enable the WVRC-8 Plus to make corrective actions.
- 100-event program scheduler for relay control and alarm muting.
- Logging of all user selected input status with site ID information which may be emailed from once an hour to once a day, along with hourly snap-shot functionality.
- Seventy-two front panel I/O activity LED indicators.
- Front panel local/operate switch with LED indicator.
- Front/Rear panel RJ-11 telephone jack used for user voice response recording
- Front/Rear panel DB-9, RS-232 programming connectors.
- Plug-in euro-block screw terminals for metering, status, relays, telco hybrid, and stereo silence sensor.
- Rear panel RJ-45, 10/100base-T LAN/Ethernet interface.
- Rear panel RJ-11 telco POTS line jack.
- Rear panel dual RJ-45 BT-Link expansion ports.
- Fused and surge protected universal power supply included.
- Fully RFI proofed.
- One rack-unit chassis.

* Denotes independent of the metering (analog) and status/logic channels.

Inspection

Please examine your WVRC-8 Plus carefully for any damage that may have been sustained during shipping. If any is noted, please notify the shipper immediately and retain the packaging for inspection by the shipper. The package should contain the WVRC-8 Plus, this manual and/or CD, 7-foot modular telephone cord, 7-foot BLUE straight-through CAT 5 cable, 7-foot GRAY crossover CAT 5 cable and the 12 VDC @ 2.5 amp universal switching power supply. Product manuals are also available for download on our web site.

Surge Protection

The WVRC-8 Plus has built-in resistance to voltage changes, we recommend that you use a power surge protector or line conditioner on the incoming AC line. Lightning strikes and other high surges in voltage levels will damage your WVRC-8 Plus and connected equipment if it is not properly protected. For lightning protection devices, check out www.polyphaser.com and www.itwlinx.com.

UPS Standby Power System

We recommend that you connect your WVRC-8 Plus to a UPS system. While all operating and user parameters are stored in non-volatile EEPROM, brownout conditions and lightning induced spikes can disable or damage equipment. A UPS helps minimize the risk to the WVRC-8 Plus and has the added benefit that it will then be able to notify you of the power outage by email and/or phone.

CAUTION!

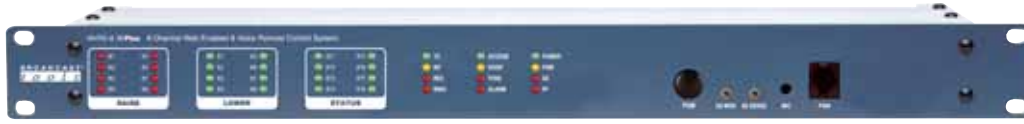
Installation of the WVRC-8 Plus in high RF environments should be performed with care. Shielded cable is suggested for all monitoring and control connections with all shields tied to the station/site ground terminal. The station/site ground should be connected to the rear panel (Gnd) 6-32 chassis screw using an 18 or 20-gauge wire.

WEBSITE:

Visit our web site for product updates and additional information.



Installation



Front panel indicators, controls and connectors

Name	Type	Description
K1 - K8 Raise	LED	Illuminates when corresponding raise relay is activated.
K1 - K8 Lower	LED	Illuminates when corresponding lower relay is activated.
ST1 - ST8	LED	Illuminates when corresponding status input is activated.
TX	LED	Flashes during server/control processor data exchange.
RX	LED	Flashes during server/control processor data exchange.
REC	LED	Illuminated when in voice record mode.
RING	LED	Illuminated when a call is being received.
ACCESS	LED	Illuminated when a valid access code is entered.
HOOK	LED	Illuminated when the unit is off-hook.
TONE	LED	Illuminated when a valid DTMF tone is detected.
ALARM	LED	Illuminated when unit is in an alarm condition.
POWER	LED	Illuminated when power is applied to the power jack.
PGM	LED	Illuminated when the unit is in programming mode.
SS	LED	Illuminated when audio is applied to the SS input, OFF when the level is too low and flashing if in an SS alarm condition, if enabled.
PF	LED	Illuminated with no power applied, OFF when adequate DC voltage is applied to the PF jack and flashing if a Power Failure alarm is active, if enabled.
PGM	Push Button	Toggles between operate and programming (local) mode.
SS Mon	Control	Sets the silence sensor audio level sent to the phone interface.
SS Sense	Control	Sets the audio trip point of the silence sensor.
Mic	Peep hole	Microphone used to monitor site audio via phone.
PGM	RJ11	Voice record TT phone port, user provided TT telephone.
PGM	Fem DB-9	Legacy RS-232 host PC programming port.

Rear panel connections, controls and switches.



Name	Type	Description
SND-/+	Connector	Balanced send (to telco) audio input (TOP).
CLR -/+	Connector	Balanced caller (from telco) audio output (TOP).
GND	Connector	Audio ground.
SS-LT/SS-RT	Connector	Unbalanced silence sensor audio input (BOTTOM).
GND	Connector	Audio ground (BOTTOM).
ALM/ALM	Connector	Normally open dry alarm relay contacts (BOTTOM).
PGM	Fem DB-9	Legacy RS-232 host PC programming port.
NETWORK	RJ45	ETHERNET port 10/100baseT, LAN/WAN.
LINE	RJ11	Connects to telephone line.
PGM	RJ11	Voice record TT phone port, user provided TT telephone.
SEND	Control	Sets the send audio level to the phone line.
CALLER	Control	Sets the telco caller audio level.
AN 1 – 8	Connector	Analog (metering) inputs one thru eight. (TOP).
AN GND	Connector	Analog (metering) ground reference terminals (TOP).
ST1A - 8A	Connector	Status opto-isolators. When configured for DRY (factory default) this terminal is ground. When configured for WET (floating), this terminal is the anode via a 2.2K ohm current limiting resistor. (BOTTOM)
ST1B - 8B	Connector	Status opto-isolators. This terminal is always the cathode (BOTTOM)
K1NC - K4NC	Connector	Normally closed, dry relay contacts. Raise function (TOP)
K1CM - K4CM	Connector	Common (wiper), dry relay contact. Raise function (TOP)
K1NO - K4NO	Connector	Normally open, dry relay contact. Raise function (TOP)
K5R - K8R	Connector	Normally open, dry relay contact. Raise function (TOP)
K5R - K8R	Connector	Common (wiper), dry relay contact. Raise function (TOP)
K1NC - K4NC	Connector	Normally closed, dry relay contact. Lower function (BOT)
K1CM - K4CM	Connector	Common (wiper), dry relay contact. Lower function (BOT)

WEBSITE:

Visit our web site for product updates and additional information.



INSTALLATION

K1NO - K4NO	Connector	Normally open, dry relay contact. Lower function (BOT)
K5L - K8L	Connector	Normally open, dry relay contact. Lower function (BOT)
K5L - K8L	Connector	Common (wiper), dry relay contact. Lower function (BOT)
CONFIGURE	Dipswitch	Used to configure the unit. Refer to table of contents.
TEMP	3.5mm Jack	Temperature probe input jack. T/R/S.
PF	2.1mm Jack	Power Failure power jack (optically-isolated). 6 - 12 VDC, center positive.
BT-LINK	Dual RJ45's	RJ45, reserved for system expansion.
12 VDC	2.1mm Jack	System power supply input. 12 volts DC only.
GND	# 6 screw	System ground screw. Tie to station ground system.

Connecting your WVRC-8 Plus to other equipment

Gnd screws

Either 6-32 screws MUST be connected to the station/site ground system for the proper operation of this equipment.

Power Failure Input

Connect a user supplied 5 to 12 volt DC only power source (center positive) to the power failure input labeled PF. The barrel connector size is 2.1mm ID x 5.5mm OD. A 5 to 12 volts DC wall transformer of any current of 10 ma or more will power this input.

NOTE: The primary (120vac) of the power failure wall transformer should be connected to the utility company side of your service. An UPS is suggested to power the WVRC-8 Plus during power outages.

NETWORK connector

Connect one end of the supplied CAT5 (straight or x-over) cable to the desired ETH-ERNET (WAN/LAN) port.

Silence Sensor Inputs

Connect your unbalanced monaural or stereo audio source to the terminals labeled SS LT, SS GD and SS RT. The nominal input level is between -10 and +24 dBu. The input impedance is approximately 22K ohms. When the SS LT and/or SS RT input has audio applied and the silence sensor function is activated the front panel SS LED will illuminate. If the SS LED is out, the audio level is not present or too low and if it's flashing, it is in an alarm condition (if enabled).

Metering (analog) inputs

CAUTION! Metering (analog) input samples may be elevated several hundred volts above ground on some external equipment. Permanent damage may occur to the WVRC-8 Plus and/or external equipment if a high voltage source is connected to the WVRC-8 Plus! Failure to observe this warning may also cause injury to the installer or other personnel. ⚡ **CAUTION! DO NOT CONNECT SAMPLE VOLTAGES IN EXCESS OF POSITIVE 10 Volts DC OR DAMAGE MAY OCCUR TO YOUR WVRC-8 Plus.**

CAUTION! Floating Grounds

Except for the status/logic (wet) inputs, none of the WVRC-8 Plus's metering (analog) inputs will accept a floating ground. Damage to the WVRC-8 Plus or your equipment may result from connecting a floating ground output to the WVRC-8 Plus. If you require metering equipment with inputs that have a floating ground, a DC isolation amplifier should be used.

Eight metering (analog) input channels are available with the WVRC-8 Plus via removable euroblock screw terminals. Connect the positive side of the metering source to the desired channel terminal labeled MTRx (where x is the channel number 1 through 8) and connect the metering source ground to the associated MGND (metering ground) terminals.

Each metering (analog) input can handle up to (positive only) 10 volts DC and must be ground referenced and connected to the associated MGND ground terminal. Inputs are self-calibrating and are based on an internal A/D converter with a precision, low-drift voltage reference, so the reading should not drift over time or with temperature. Metering setup is performed by connecting the sample voltage to the MTRx and MGND metering (analog) input, then calibrating for the desired value (reading) using the web interface.

NOTE: Valid sample voltages MUST be applied to the selected metering input in order to perform calibration.

Status/Logic Inputs

Each status/logic input is optically isolated and can be configured to accept either a contact closure (DRY = default) or a (floating, WET) input. Attach your dry contacts to the desired status/logic channels StxA and STxB (where x is the status/logic input channels 1 thru 8) terminals.

Each input is equipped with a four-position header (please refer to the jumper layout in the appendix). JP1 configures status/logic input one, JP2 status/logic input two, JP3, status/logic input three and JP8, status/logic input eight. Each jumper (JPx, where x is the status/logic input) and the header pins 1,2,3,4 are used to configure for wet or dry operation. The factory default is jumpers between pins 1 & 2 and pins 3 & 4 for DRY operation (switches, relay contacts, and open collector outputs.) In the DRY configuration, the “A” terminal is ground while the “B” terminal is the cathode of the opto-isolator diode (pulled up to 5 volts through a 2.2K resistor).

To change a status/logic input to (floating) WET (user supplied voltage between 5 and 24 vdc), remove both jumpers from JPx and place ONE jumper over pins 2 & 3. Connect the positive voltage to terminal “A” (anode) and ground or minus voltage to terminal “B” (cathode).

NOTE: Please refer to the appendix for configuration examples and observe proper polarity.

Raise and Lower Control Relays

Four of the eight raise and lower relays are supplied with SPDT (form C) dry contacts. The remain four raise and lower relays use SPST (form A) dry contacts. External equipment to be controlled should be connected to the terminals labeled L1NO, L1CM, L1NC for the four SPDT lower relays and R1NO, R1CM, R1NC for the four SPDT raise relays.

NOTE: If mechanical latching relays are required, we suggest the Broadcast Tools LR-5 (4PDT & SPST) mechanical latching relay.

TEMPerature Probe Inputs

Insert the temperature probe (25 foot cable) mini (3.5mm) plug in to the rear panel jack labeled “TEMP” -67°F to +257°F (-55°C TO +125°C). **NOTE:** The temperature probe should only be installed or removed with the power supply disconnected from the WVRC-8 Plus. Please contact the factory for the proper extension cable. Please limit the total length of cable to 50 feet.

12 V DC (Power) connector

Connect the supplied universal 12 volt DC only, 2.5 amp regulated power supply cord in to the WVRC-8 Plus’s power jack (center positive) labeled “12V DC Power”, then plug the transformer in to a source of 100 to 250 vac 50/60Hz. Verify that the front panel green power led is illuminated.

NOTE: The (RTC) real time clock/calendar’s battery may be disabled by removing the jumper over JP20. WVRC-8 rev. K and above.

WEBSITE:

Visit our web site for product updates and additional information.



INSTALLATION

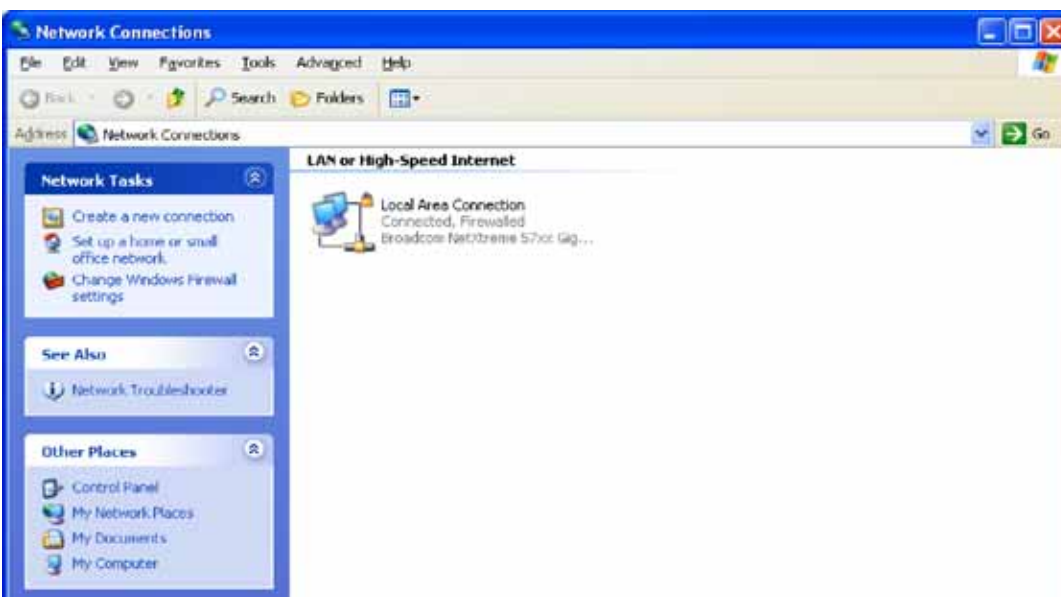
Web Setup and Operation

Ethernet “Quick Start” guide

Step 1: Open the control panel by clicking on the start menu, click on settings, then click on Control Panel. (Note that the control panel shown is in “Classic View”. If control panel is in “Category View” select the “Classic View” option before proceeding.)



Step 2: Double click on the icon labeled Network Connections. The following menu will pop up.



CAUTION!

NEVER download firmware updates or changes to the XPort webserver unless instructed to do so by Broadcast Tools®, doing so deletes all software and voids all warranties from Broadcast Tools®, inc.

NOTE:

We recommend the use of the latest version of Firefox, Safari for Windows or Chrome as your browser.

CAUTION!

If you are not familiar with Ethernet enabled equipment, it may be useful to contact your IT department, network administrator or network consultant for assistance. Assigning an IP address already in use by another device may cause problems with your network!

Instructions for changing the IP address of the computer that will be used for the configuration of this product are given here. Note that these instructions are specifically for computers with the Windows XP operating system. For setup using other operating systems, refer to the appropriate OS user's manual.

Step 3: Right click on the icon labeled Local Area Connection. Another menu will appear. Select the option at the bottom of the menu labeled Properties. The Local Area Connection Properties window will appear.



Step 4: On the Local Area Connection Properties page, double click on Internet Protocol (TCP/IP) to display properties.



Step 5: Before making any changes to the network settings, write down the current settings (or screen capture the page and print) so that they can be restored once the unit is configured. Next, select the radio button labeled “Use the following IP address” and type in the IP address 192.168.1.60. Type in the subnet mask of 255.255.255.0. Leave the default gateway field blank. Click OK to apply the new settings.

WEBSITE:

Visit our web site for product updates and additional information.



“Login” Web Page

The Login screen displays the Username and Password entry points as well as the date, time, and site ID.

You may view the password by checking the “Show Password” box.



After you have successfully logged in, the Monitor/Control page will be displayed.

WEBSITE:

Visit our web site for product updates and additional information.



“Monitor/Control” Web Page



The Monitor/Control page allows the monitoring and/or control of the WVRC-8 Plus. The following is an explanation of each item on this page:

Queued Logs: Displays the number of queued log entries scheduled to be emailed.

Meters: Eight metering (analog) input channels.

Virtual Channels: Four virtual metering channels.

Relays: Allows the user with admin or monitor/control access to control each relay.

Status: Displays the current state of the eight status/logic inputs.

Power Failure: Indicates state of power failure (PF) input.

Silence Sensor: Displays the silence sensor audio input status.

“User Setup” Web Page

Username	Password	Show Password	Access Level		
			Admin	Monitor Control	Monitor Only
admin	****	<input checked="" type="checkbox"/>	<input checked="" type="checkbox"/>	<input checked="" type="checkbox"/>	<input checked="" type="checkbox"/>
		<input type="checkbox"/>	<input type="checkbox"/>	<input type="checkbox"/>	<input type="checkbox"/>
		<input type="checkbox"/>	<input type="checkbox"/>	<input type="checkbox"/>	<input type="checkbox"/>
		<input type="checkbox"/>	<input type="checkbox"/>	<input type="checkbox"/>	<input type="checkbox"/>
		<input type="checkbox"/>	<input type="checkbox"/>	<input type="checkbox"/>	<input type="checkbox"/>
		<input type="checkbox"/>	<input type="checkbox"/>	<input type="checkbox"/>	<input type="checkbox"/>
		<input type="checkbox"/>	<input type="checkbox"/>	<input type="checkbox"/>	<input type="checkbox"/>
		<input type="checkbox"/>	<input type="checkbox"/>	<input type="checkbox"/>	<input type="checkbox"/>

Eight Usernames and Passwords may be configured for up to three access levels:

1. “admin” allows complete configuration access and control.
2. “Monitor/Control” allows the following access:
About, Monitor/Control, Show log, Help, and Logout.
3. “Monitor Only” allows the following access:
About, Monitor only, Help, and Logout.

Only users with “admin” access can make changes to this page.

The site ID is displayed and can be changed on the Email/Network Setup page.

NOTE: After any item has been changed, you **MUST** press the “Save Settings” button for your changes to be saved.

WEBSITE:

Visit our web site for product updates and additional information.



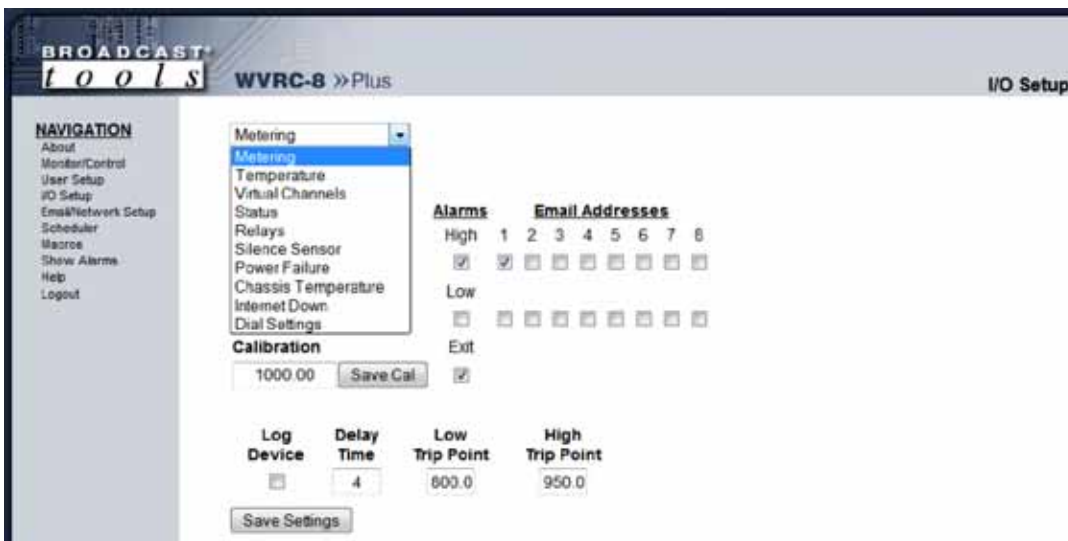
“I/O” Setup Page

The following terms and ideas will help in the configuration of this device.

Alarms: Alarms occur when an I/O Device falls into a specified threshold, this could be an analog value going above or below a set point, a relay turning on or a digital input going high or low. Each I/O Device can be configured to dial-out to specified phone numbers and/or send emails when it enters an alarm condition.

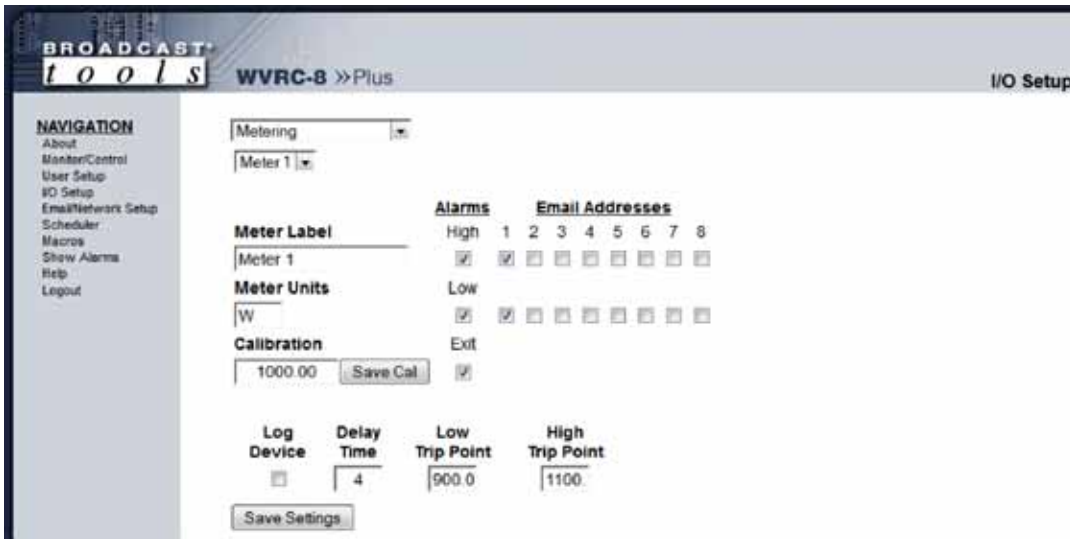
Emails: Each I/O device can be configured to send an email to up to 8 email recipients When the device enters or exits an alarm condition. Some devices have multiple alarm conditions, such as a High and a Low alarm state. If the device is configured to send an Exit email then the recipients list that was used for entering the alarm state will also be used when exiting the alarm state.

Logs: The WVRC-8 offers two forms of logging. The first is the snapshot email log which compiles snapshots of all inputs and outputs with logging enabled at a user defined interval. For example, the WVRC-8 Plus can be configured to record a snapshot of a metering input each hour and then email those compiled readings every 24 hours.



On the I/O Setup screen, choose from the top drop-down box the device to configure.

Metering



- Metering input selection: Select metering inputs 1-8 for configuration.
- Meter Label: Used to identify the metering input source.
- Meter Units: Units label in engineering units, such as V = Volts, A = Amps, W = Watts, etc.
- Calibration: Enter the value of the desired meter reading.

NOTE: In order to calibrate, a valid DC sample voltage must be applied to each input that you are calibrating. The calibration value must be positive and can support a resolution up to 2 decimal places. The user **MUST** enter a calibration value and press the “Save Cal” button in order to store the value. You do not need to press the “Save Settings” button to save the calibration, only the other settings.

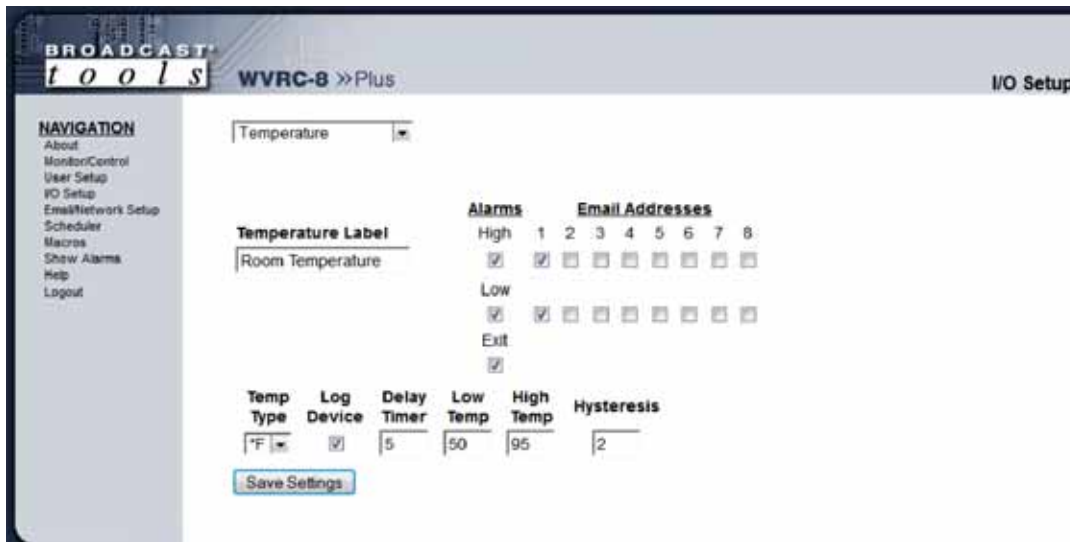
- Alarms High: This option enables the “High Trip Point” alarm.
- Alarms Low: This option enables the “Low Trip Point” alarm.
- Alarms Exit: This option enables the generation of an alarm after exiting a high or low alarm state.
- Email Addresses: This allows you to assign up to 8 email addresses to send alarm emails to whenever the input enters an alarm state.
- Log Device: Enables the email snapshot logging of the input.
- Delay time: Specifies the delay time from when the input value is above or below the set alarm trip points and an alarm is generated. 0-999 seconds
- Low trip point: This option specifies the LOW alarm set-point.
- High trip point: This option specifies the HIGH alarm set-point.

NOTE: After any item has been changed, you **MUST** press the “Save Settings” button for your changes to be saved.

WEBSITE:
 Visit our web site for product updates and additional information.



“I/O” Setup Page - Temperature



- Temperature Label: Identifies the temperature input source.
- Alarms High: This option enables the “High Trip Point” alarm.
- Alarms Low: This option enables the “Low Trip Point” alarm.
- Alarms Exit: This option enables the generation of an alarm after exiting an alarm state.
- Email Addresses: This allows you to assign up to 8 email addresses to send alarm emails to whenever the input generates an alarm.
- Log Device: This enables the email snapshot logging of this input.
- Delay Timer: Specifies the delay time from when the input value is above or below the set alarm trip points and an alarm is generated. 0-999 seconds
- Low Temp: This option specifies the LOW alarm temperature set point.
- High Temp: This option specifies the HIGH alarm temperature set point.
- Temp Type: This option specifies what temperature scale will be used, Fahrenheit or Centigrade.
- Hysteresis: Hysteresis (deadband), this option specifies the hysteresis used when evaluating alarm conditions.

NOTE: Hysteresis prevents alarms from activating excessively due to normal fluctuation when the temperature is at a set alarm point. For example, if the hysteresis is set to 1 degree, and a high temp. alarm is set at 91 degrees, hysteresis ensures that once the high alarm is triggered, it won't go off until the temperature returns to below 91 degrees (90 - 1). This reduces problems with small fluctuations in temperature readings triggering multiple alarms. The hysteresis value is also used during low alarm conditions. If, for example, a low temp. alarm is set to 43 degrees and the hysteresis is set to 1 degree, then once the low alarm is triggered, it won't go off until the temperature returns a value higher than 44 degrees (43 + 1).

NOTE: After any item has been changed, you **MUST** press the “Save Settings” button for your changes to be saved.

Virtual Channels

The screenshot shows the 'I/O Setup' screen for 'WVRC-8 >Plus'. On the left is a 'NAVIGATION' menu with options like 'About', 'Monitor/Control', 'User Setup', 'I/O Setup', 'Email/Network Setup', 'Scheduler', 'Macros', 'Show Alarms', 'Help', and 'Logout'. The main area has a 'Virtual Channels' dropdown menu set to 'Channel 1'. Below this is a table with columns for 'Virtual Channel Label', 'Alarms', and 'Email Addresses'. The 'Alarms' section has checkboxes for 'High', 'Low', and 'Exit'. The 'Email Addresses' section has checkboxes for 8 addresses. There are input fields for 'Analog 1' (Meter 2), 'Analog 2' (Meter 3), 'Log Device' (checked), 'Delay Time' (30), 'Low Trip Point' (900.0), and 'High Trip Point' (1100). A 'Save Settings' button is at the bottom.

Virtual Channel selection: Select the virtual channel (1-4) for configuration.

Virtual Channel Label: Identifies the virtual channel.

Virtual Channel Units: Unit label in engineering units, such as V = Volts, A = Amps, W = Watts, etc.

Multiply Constant: Enter the value of the multiplier constant. Press “Save Cal” to apply the constant.

Analog 1 and 2: Analog metering input to use in Virtual Channel calculation.

NOTE: The value of the Virtual Channel will be calculated by multiplying the values of Analog 1, Analog 2 and the Multiplier Constant together.

Alarms High: This option enables the “High Trip Point” alarm.

Alarms Low: This option enables the “Low Trip Point” alarm.

Alarms Exit: This option enables the generation of an alarm after exiting a high or low alarm state.

Email Addresses: This allows you to assign up to 8 email addresses to receive alarm emails.

Log Device: Enables the email snapshot logging of this channel.

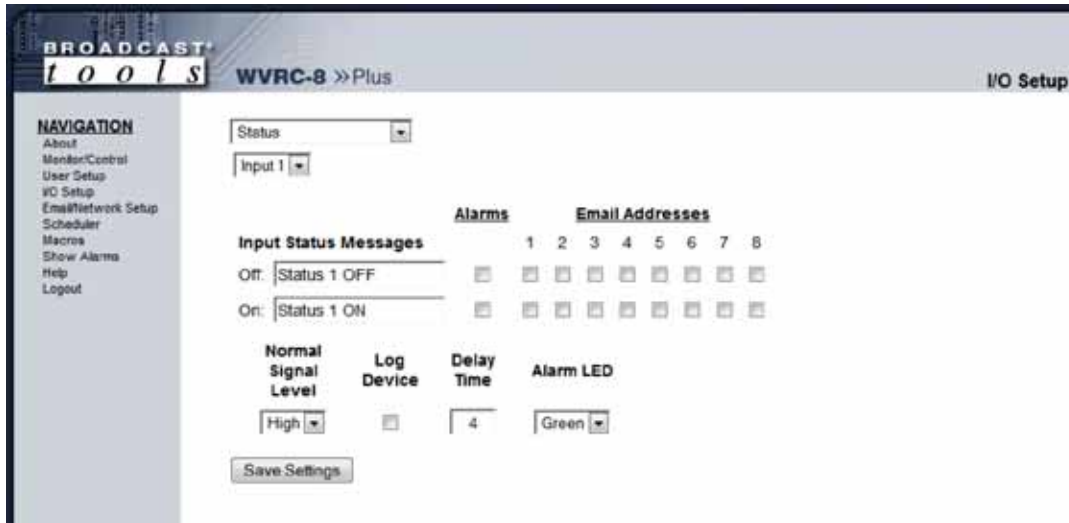
Delay time: Specifies the delay time from when the channel value is above or below the set alarm trip points and an alarm is generated. 0-999 seconds

Low trip point: This option specifies the LOW alarm set point.

High trip point: This option specifies the HIGH alarm set point.

NOTE: After any item has been changed, you MUST press the “Save Settings” button for your changes to be saved.

Status



Input Status Messages: Identifies the status input source and condition.

Alarms OFF: Enables an alarm when the input is OFF.

Alarms ON: Enables an alarm when the input is ON.

Email Addresses: This allows you to assign up to 8 email addresses to receive alarm emails.

Normal Signal Level: This drop-down configures the input signal to be normally High or normally Low. This is used to determine if an input is ON or OFF.

NOTE: When the "Normal signal level" is set to **HIGH = NO voltage is applied to the input (WET or no closure when configured for DRY), it's considered OFF, when voltage IS applied (WET or completed closure set to DRY) to the input, it is considered ON.**

Log Device: This enables the email snapshot logging of this device.

Delay time: Specifies the delay time from when the input is ON or OFF and an alarm is generated. 0-999 seconds

Alarm LED: Sets the color of the "LED" visual indicator on the Monitor/Control page.

WEBSITE:

Visit our web site for product updates and additional information.



Relays



- Relay Label: Used to identify the attached device/function.
- Alarms OFF: Enables an alarm when the relay is OFF.
- Alarms ON: Enables an alarm when the relay is ON.
- Email Addresses: This allows you to assign up to 8 email addresses to receive alarm emails.
- Pulse: This is the number of milliseconds the relay will be activated when it is turned on. This value applies to the Raise/Lower configuration as well as the Pulse function in the Toggle/Pulse configuration.
- Raise/Lower Configuration: When checked the relay will be presented in raise/lower configuration. When unchecked the relay will pre presented in Toggle/Pulse configuration and can be toggled on/off or pulsed.

NOTE: Pulse will activate the relay, delay for the specified amount of time and then deactivate the relay. If the relay is already on, Pulse will turn it off, delay then turn it on.

WEBSITE:
 Visit our web site for product updates and additional information.



Relays – Event Action Sequencer

Event action sequencer: Allows an alarm event from one of the inputs to automatically trigger the relay.

Enable: Enables the event action sequencer.

Action: When (meter, status, silence sensor, power failure or temperature) (input number) is (in ? condition) delay (xx) seconds then engage for (xx) seconds.

EXAMPLE: When (meter) (1) is (in High Alarm) delay (1) seconds then engage for (2) seconds.

In the above example: When [metering input] [1] is [in high alarm] for more than [10] seconds, (the desired relay) then engage for [pulse] 2 seconds.

NOTE: After any item has been changed, you MUST press the “Save Settings” button for your changes to be saved.

Silence Sensor

The screenshot shows the 'I/O Setup' page for the 'WVRC-8 >>Plus' device. The 'Silence Sensor' is selected in a dropdown menu. The interface includes a 'NAVIGATION' sidebar with options like About, Monitor/Control, User Setup, I/O Setup, Email/Network Setup, Scheduler, Macros, Show Alarms, Help, and Logout. The main configuration area has a 'Label' field containing 'Silence Sensor'. Below it are 'Alarms' and 'Email Addresses' sections. The 'Alarms' section has 'Enter' and 'Exit' rows, each with a checked checkbox and eight empty checkboxes. The 'Email Addresses' section has eight empty checkboxes. At the bottom, there are fields for 'Log Device' (unchecked), 'Delay Time' (30), and 'Restore Time' (10). A 'Save Settings' button is at the bottom left.

Label: Used to identify the audio source.

Alarms Enter: Enables an alarm for when silence is detected.

Alarms Exit: Enables an alarm for when the silence detector detects that audio has returned.

Email Addresses: This allows you to assign up to 8 email addresses to receive silence alarm emails.

Log Device: This enables the email snapshot logging of this input.

Delay Time: Specifies the delay time between detected silence and alarm activation. The delay is entered in seconds (0 to 999).

Restore Time: The input audio must be above threshold for this amount of time before it is counted as present. The delay is entered in seconds (0 to 999).

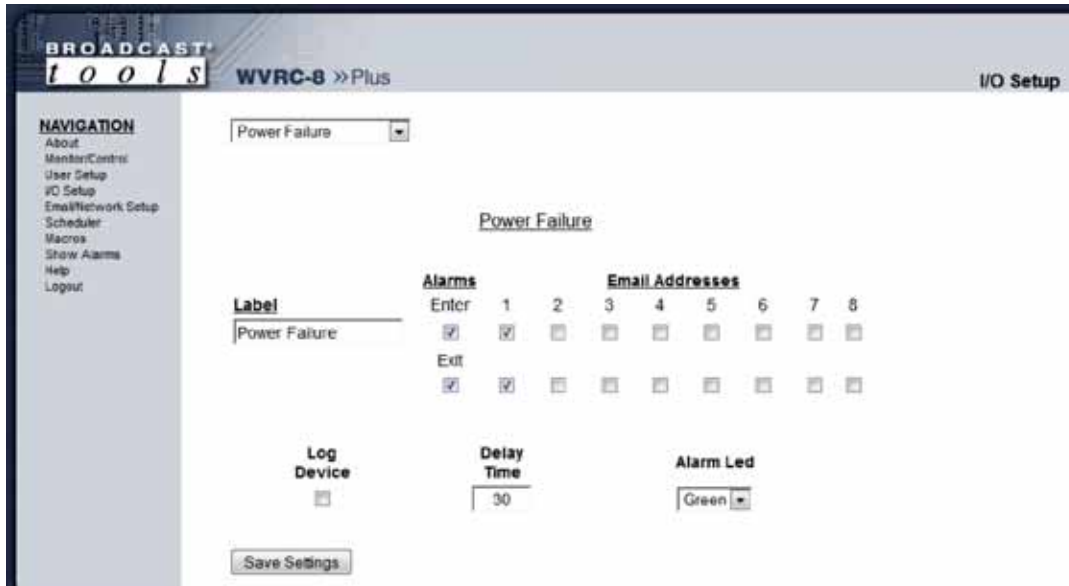
NOTE: After any item has been changed, you **MUST** press the “Save Settings” button for your changes to be saved.

WEBSITE:

Visit our web site for product updates and additional information.



Power Failure



Label: Used to identify the input.

Alarms Enter: This option enables an alarm if voltage is no longer present on the PF input.

Alarms Exit: This option enables an alarm when voltage returns to the PF input.

Email Addresses: This allows you to assign up to 8 email addresses to receive power failure emails.

Log Device: This enables the email snapshot logging of this input.

Delay Time: This option specifies the wait time from when power failure is detected before an alarm is activated. The delay is entered in seconds (0 to 999).

Alarm LED: Sets the color of the “LED” visual indicator on the Monitor/Control page when in an alarm condition.

NOTE: After any item has been changed, you **MUST** press the “Save Settings” button for your changes to be saved.

Chassis Temperature (WVRC-8 rev. K and above)

Alarms Enter: This option enables the “Temp High” alarm.

Alarms Exit: This option enables the generation of an alarm after exiting an alarm state.

Email Addresses: This allows you to assign up to 8 email addresses to send alarm emails to whenever the input generates an alarm.

Log Device: This enables the email snapshot logging of this input.

Delay Timer: Specifies the delay time from when the input value is above the set alarm trip point and an alarm is generated. 0-999 seconds

Temp High: This option specifies the HIGH alarm temperature set point.

Temperature Type: This option specifies what temperature scale will be used, Fahrenheit or Centigrade.

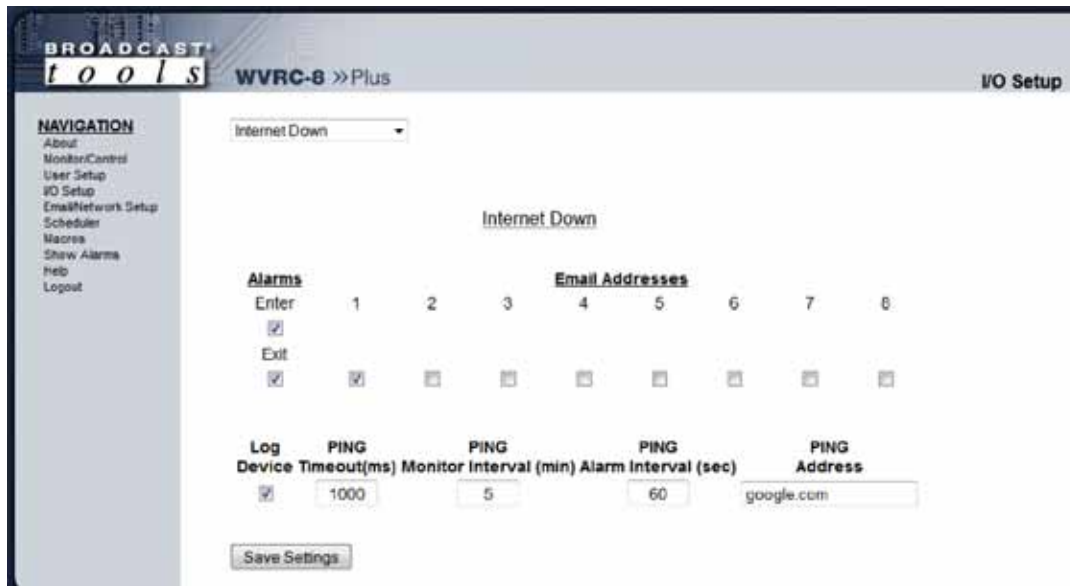
NOTE: After any item has been changed, you **MUST** press the “Save Settings” button for your changes to be saved.

WEBSITE:

Visit our web site for product updates and additional information.



Internet Down



The Internet Down alarm allows the WVRC-8 Plus to monitor the reachability of a specified DNS address or IP address using an ICMP ping. The ICMP ping is a commonly used extension to the Internet Protocol (IP). ICMP supports packets containing error, control, and informational messages. The PING command, for example, uses ICMP to test an Internet connection.

Alarms Enter: This option enables the “Internet Down” alarm when ping monitoring of the ping address is lost.

Alarms Exit: This option enables an alarm after exiting an “Internet Down” condition.

Email Addresses: This allows you to configure up to 8 emails to be sent whenever the device exits an “Internet Down” alarm.

Log Device: This enables the email logging of this device.

Ping Timeout: This specifies how long to wait for a ping response from the ping address before timeout(unreachable.)

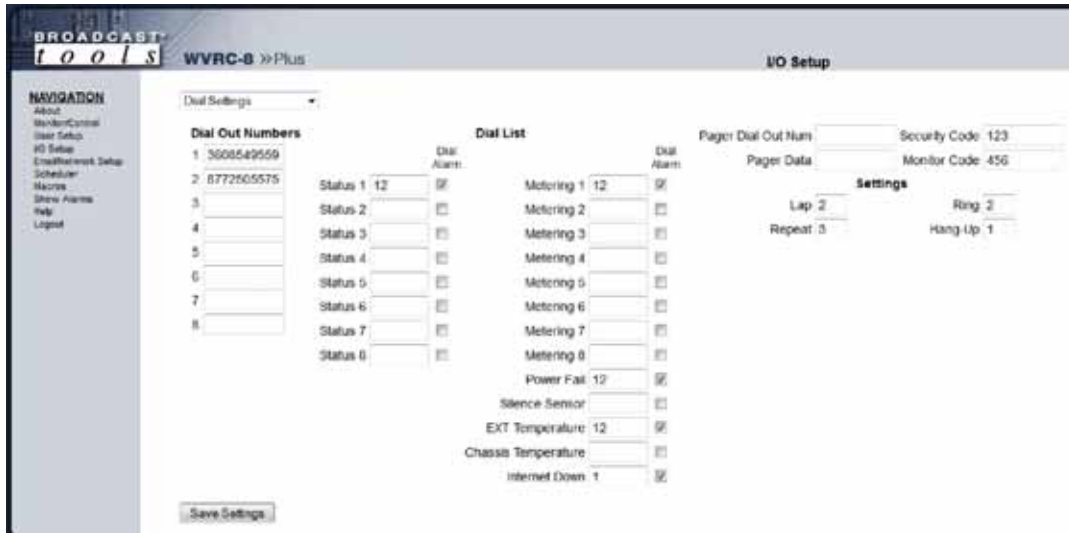
Ping Monitor Interval: The interval at which the WVRC pings the ping address in a non-alarm state.

Ping Alarm Interval: The interval at which the WVRC pings the ping address while in an Internet Down alarm state.

Ping Address: Enter the DNS address or IP address that you wish to monitor.

NOTE: After any item has been changed, you **MUST** press the “Save Settings” button for your changes to be saved.

Dial Settings



Dial Out Numbers: Enter the phone numbers you want to be able to assign to be dialed when alarms are generated.

Dial List: This allows you to enable dial out alarms and assign phone numbers to each input.

Example: Status 1 on the dial list has a 12 entered in to it. When an alarm is generated for Status Input 1 the WVRC-8 will call dial out number 1 (3608549559) if no acknowledgement is received it will then call dial out number 2 (8772505575).

The WVRC-8 Plus can be also be configured to dial a pager when an alarm is triggered.

Pager Dial Out Number: Enter the pager number here. A comma (,) can be used any place in the dialing strings to place a one second pause and a semi-colon (;) for a five second pause.

Pager Data: This is used to identify the station or location of the device

To assign the pager dial out number to an alarm just enter the number 9 on the dial list for alarm you wish to monitor. When an alarm that has been assigned to call the pager is active it will dial the pager dial out number, send a two-digit code indicating the source of the alarm as well as the pager data string, which can be used to identify the station or location of the device. The two-digit alarm codes are as follows: 1–18 for analog (metering) inputs one through 8, 19 for temperature, 20 for power failure, 21–28 for status inputs one through eight and 29 for a silence sensor.

WEBSITE:
Visit our web site for product updates and additional information.



Security Code: This is the device's dial-up control access code, you need to enter this code to gain control of the device over the phone. The default code is 123.

Monitor Code: This dial-up access code allows users to monitor or poll the devices inputs. No control functions can be performed unless a valid Security access code has been entered. The default code is 456.

Lap: Specifies the number of times the WVRC-8 Plus will go through all of the numbers in the dial list when calling out an alarm if it does not receive an acknowledgement.

NOTE: Alarms are acknowledged by pushing the star (*) key when an alarm is called out.

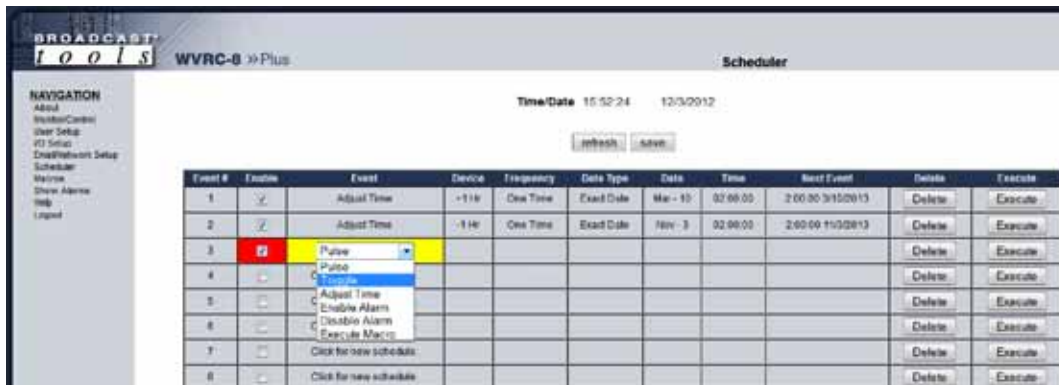
Ring: Specifies the number of rings required before the WVRC-8 Plus answers an incoming call.

Repeat: Specifies the number of times the voice message will be repeated when an alarm is called out.

Hang-Up: Specifies the number of minutes of inactivity required after answering a call before hanging up automatically if no CPC disconnect has already been received.

NOTE: After any item has been changed, you MUST press the "Save Settings" button for your changes to be saved.

“Scheduler” Setup Page



The Scheduler allows for complete control of your WVRC-8 Plus device by providing the ability to schedule when alarms are enabled or disabled, pulse or toggle relays, execute macros and even adjust the time for daylight savings.

All 100 schedulable events can also be enabled or disabled; only enabled schedule events are processed. Each schedule event consists of 2 main components, the action to do (event) and when to do it (date/time).

Schedule events are enter in the "Scheduler" menu shown above. Empty/unused schedule slots will have the text "Click for new schedule" listed in the "Event" column. When you select a cell in the scheduler table it will transform into the available options for that cell. Blue colored cells are unselected and are saved while Red colored cells are unselected and are not saved. Yellow colored cells are selected. There can only be one selected cell at a time and changing some cells may change other cells. It is best to work left to right when configuring a schedule event.

To select a cell just click in the cell box and it will transform, the background will be yellow and you should have either drop down boxes or checkboxes to select from. To unselect a cell, click inside the the yellow portion of the cell or onto another cell. Clicking on another cell will select that cell if it can be selected.

At the top and bottom of the "Scheduler" page are "refresh" and "save" buttons. All red cells on the scheduler page are in need of saving and will not be stored or executed until saved. To restore from the previously saved schedules click the "refresh" button.

The last 3 cells of each schedule event are the "Next Event", "Delete", and "Execute" items. "Next Event" lists the date and time that the event is scheduled to occur next. "Delete" will delete the schedule but still requires saving before the change is permanent. "Execute" will execute the action immediately regardless of whether or not it's enabled for scheduled to occur, ensure that you save before executing a schedule since changes are not updated to the WVRC-8 Plus until the save button is pressed.

NOTE: The Scheduler page does not auto refresh, please click “refresh” to update the “Next Event” time.

WEBSITE:
Visit our web site for product updates and additional information.



Actions

Event #	Enable	Event	Device	Freq
1	<input checked="" type="checkbox"/>	Enable Alarm	Metering	
2	<input type="checkbox"/>	Click for new schedule.	Metering	
3	<input type="checkbox"/>	Click for new schedule.	Temperature	
4	<input type="checkbox"/>	Click for new schedule.	Virtual Chan.	
5	<input type="checkbox"/>	Click for new schedule.	Status	
			Relays	
			Internet Down	
			Silence Sensor	
			Power Failure	

Enable/Disable Alarms: Alarms for every device that the WVRC-8 Plus monitors can be enabled and disabled by the scheduler. Select the appropriate "Enable Alarm" or "Disable Alarm" from the "Event" drop down box on the Scheduler Setup Page to configure this item. Then from the "Device" drop down box select from the 8 monitored device types and its device number.

Event #	Enable	Event	Device	Freq
1	<input checked="" type="checkbox"/>	Pulse	Raise 3	
2	<input type="checkbox"/>	Click for new schedule.	Raise 1	
3	<input type="checkbox"/>	Click for new schedule.	Raise 2	
			Raise 3	
			Raise 4	

Pulse/Toggle: Relays can be pulsed or toggled from the scheduler as well. Select "Pulse" or "Toggle" from the "Event" drop down box on the Scheduler Setup Page to configure this item. Then from the "Device" drop down box select the relay you wish to control. The Pulse duration is configured on the "Relay Setup Page" under "I/O Setup".

Event #	Enable	Event	Device	Freq
1	<input checked="" type="checkbox"/>	Adjust Time	-1 Hr	
2	<input type="checkbox"/>	Click for new schedule.	-1 Hr	
3	<input type="checkbox"/>	Click for new schedule.	+1 Hr	

Adjust Time: To assist with daylight savings adjustment, the WVRC-8 Plus 8 can add or subtract 1 hour from the time-zone offset. Time-zone offset is initially configured under "Email/Network Setup" and this adjustment will change that value at the scheduled time. Select "Adjust Time" from the "Event" drop down box then from the "Device" drop down box select either "-1 Hr" or "+1 Hr" to decrement or increment the time-zone offset.

Actions

Event #	Enable	Event	Device	Freq
1	<input checked="" type="checkbox"/>	Execute Macro	Macro 6 True Clause False Clause	
2	<input type="checkbox"/>	Click for new schedule.		
3	<input type="checkbox"/>	Click for new schedule.		

Execute Macro: The Scheduler can also execute either the true or false clause of any macro defined under the "Macros" Setup page. Select "Execute Macro" from the "Event" drop down box then from the "Device" drop down box select the macro number and either the "True Clause" or "False Clause" to be executed. The macro does not need to be enabled for the clause to be executed. If the clause is empty then no action is taken.

Configuring Event Time:

Event #	Enable	Event	Device	Frequency
1	<input checked="" type="checkbox"/>	Pulse	Raise 1	One Time One Time Repeat
2	<input type="checkbox"/>	Click for new schedule.		

Frequency: Scheduled events can be initiated either on a repeat or one-time basis. One-time events will be disabled after executing while repeat events will continue to be rescheduled. Select either "Repeat" or "One Time" from the "Frequency" drop down.

Date: Selecting when an event occurs can be based on either an exact date (Month/Day) or based on specific days of the week and months in the year. One time events can only be scheduled for an exact date, while repeat events can be scheduled for either exact dates or day/months.

Event #	Enable	Event	Device	Frequency	Date Type	Date
1	<input checked="" type="checkbox"/>	Pulse	Raise 1	One Time	Exact Date	Jul 1
2	<input type="checkbox"/>	Click for new schedule.				
3	<input type="checkbox"/>	Click for new schedule.				

To select the Date for an "Exact Date" type choose the month and day from the two drop down boxes under "Date"

Event #	Enable	Event	Device	Frequency	Date Type	Date
1	<input checked="" type="checkbox"/>	Pulse	Raise 1	Repeat	Day/Months	Su M T W Th F Sa <input type="checkbox"/> <input checked="" type="checkbox"/> <input checked="" type="checkbox"/> <input checked="" type="checkbox"/> <input checked="" type="checkbox"/> <input checked="" type="checkbox"/> <input type="checkbox"/> Jan Feb Mar Apr May Jun Jul Aug Sep Oct Nov Dec

To select the date for a "Day/Months" type choose the months and days of the week by checking the checkboxes under "Date" for the days of the week and months of the year that you want this event to happen.

WEBSITE:
 Visit our web site for product updates and additional information.



Event #	Enable	Event	Device	Frequency	Date Type	Date	Time
1	<input checked="" type="checkbox"/>	Power	Power	Repeat	Days/Months	Jan-Feb-Mar-Apr-May-Jun-Jul-Aug-Sep-Oct-Nov-Dec	Hr Min Sec 8 20 0

Time: Selecting the time of day an event occurs is accomplished using the "Time" column. Hours are referenced as Military Time and include 0-23 as well as "All Hours". When "All Hours" is selected the event will be scheduled for all hours on the day it is schedule to execute, otherwise it is only scheduled for the specific hour. Events can also be configured to execute at a specific minute and second, though no "All Hours" options exist for minutes and seconds.

“Macros” Setup Page



The WVRC-8 Plus's macro system allows for the ability to trigger relay events based on combinatorial logic of status and meter inputs. Each of the 50 available macro slots has a conditional statement as well as a true and false clause. When a macro is enabled it is evaluated every second and either the true or false clause is executed, empty true and false clauses are allowed and no action is taken if they are empty.

Configuring Macros is accomplished from the "Macros" menu. When you select a cell in the macro table it will transform into a text box. Blue colored cells are unselected and are saved while Red colored cells are unselected and are not saved. Yellow colored cells are selected. There can only be one selected cell at a time.

To select a cell just click in the cell box and it will transform, the background should be yellow. To unselect a cell, click in the yellow portion of the cell or onto another cell. Clicking on another cell will select that cell if it can be selected.

At the top and bottom of the "Macros" page are "refresh" and "save" buttons. All red cells on the macro page are in need of saving and will not be executed until saved. To restore from the previously saved macros click the "refresh" button.

The last 2 cells of each schedule include the "Evaluation" and "Delete" items. "Evaluation" shows the conditionals evaluated state at last refresh. "Delete" will delete the macro but still requires saving before the change is permanent.

Macros can also be imported and exported by using the Import/Export buttons at the bottom of the page. When exporting macros, all 50 macros will be stored in a file that can be downloaded and uploaded to another WVRC-8 Plus device or reloaded into the same device.

WEBSITE:

Visit our web site for product updates and additional information.



Conditional:

Conditional statements must be encompassed in open and closed parenthesis and additional parenthesis are allowed within the statement in order to enforce evaluation order. Conditionals must be separated by the & or the | symbols to indicate Boolean AND and Boolean OR operations. If after evaluating every conditional statement and applying the AND and OR operators the conditional results as TRUE then the TRUE clause will be executed, if the conditional results as FALSE then the FALSE clause will be executed.

Status: The status conditional takes 2 parameters, the status number and whether it is high or low. The following are valid status conditionals:

S01H

S02L

The first will evaluate as TRUE if Status Input 1 is high and will evaluate as FALSE if Status Input 1 is low. The second will evaluate as TRUE if Status Input 2 is low and will evaluate as FALSE if Status Input 2 is high.

Since there are 8 status inputs S01x to S08x are allowed Status Conditionals.

Meters: The meter conditional takes 2 parameters, the meter number and whether it is in high alarm or low alarm. The following are valid meter conditionals.

M01H

M01L

The first will evaluate as TRUE if Meter Input 1 is in high alarm and will evaluate as FALSE if Meter Input 1 is either in low alarm or not in an alarm. The second will evaluate as TRUE if Meter Input 2 is in low alarm and will evaluate as FALSE if Meter Input 2 is either in high alarm or not in an alarm. Since there are 16 status inputs M01x to M16x are allowed Meter Conditionals.

Relays: The relay conditional takes 2 parameters, the relay number and whether it is high or low. The following are valid relay conditionals:

R01H

R02L

The first will evaluate as TRUE if Relay 1 is high and will evaluate as FALSE if Relay 1 is low. The second will evaluate as TRUE if Relay 2 is low and will evaluate as FALSE if Relay 2 is high.

Booleans: There are 99 Boolean variables that can be set in clauses and read as conditionals. At start-up all 99 Boolean variables default to FALSE. The Boolean conditional takes 2 parameters, the Boolean number and whether it is true or false. The following are valid Boolean conditionals:

B01H

B02L

The first will evaluate as TRUE if Boolean 1 is TRUE and will evaluate as FALSE if Boolean 1 is FALSE. The second will evaluate as TRUE if Boolean 2 is FALSE and will evaluate as FALSE if Boolean 2 is TRUE.

“Macros” Setup Page cont

Local: The local switch can also be read. The following two conditions are the only allowed conditions for the Local switch.

L00H

L00L

The first will return TRUE if the local switch is high and FALSE if the local switch is low. The second will return TRUE if the local switch is low and will return FALSE if the local switch is high.

Reset: When the system is resetting to default settings (only on boot) then the reset conditional is set to true. The following two conditions are the only allowed conditions for the Reset switch.

R00H

R00L

The first will return TRUE if the reset switch is high and FALSE if the reset switch is low. The second will return TRUE if the reset switch is low and will return FALSE if the reset switch is high.

Clauses: Clauses perform actions such as setting a Boolean value, setting the state of a relay or executing the event of a schedule. Each item in a clause statement is separated by a comma and is executed in order from left to right.

Relays: Relays can be turned on, off or pulsed from a clause. The duration for the relay pulse is configured under "Relay Setup" on the "I/O Setup" page. The relay clause contains 3 parts, the 'R' the relay number and the action.

R01H - will turn Relay 1 high

R01L - will turn Relay 1 low

R01P - will pulse Relay 1

Turning a relay high or low that is already in that state will have no effect.

Booleans: Booleans can be set to TRUE or FALSE from a clause.

B01T - will set Boolean 1 to TRUE

B01F - will set Boolean 1 to FALSE

Events: Events on the Scheduler page can be executed from a macro clause, regardless of whether or not the Schedule is enabled. Only the first 99 schedules can be executed from a clause.

E01T - Will execute Event 1

E01F - Will also execute Event 1

The 3rd parameter of this operation has no bearing.

Restoring to Factory Defaults

NOTE: The WVRC-8 Plus factory defaults may be restored by holding the front panel “PGM” button IN, repowering the unit, wait for the SS and PF LED’s to flash, then release the “PGM” button.

WEBSITE:

Visit our web site for product updates and additional information.



“Email/Network Setup” Web Page

BROADCAST tools WVRC-8 >> Plus Email / Network Setup

NAVIGATION
 About
 Master/Control
 User Setup
 IO Setup
 Email/Network Setup
 Scheduler
 Macros
 Show Alarms
 Help
 Logout

Device Address: 192 . 168 . 1 . 55
 Device Netmask: 255 . 255 . 255 . 0
 Gateway Address: 192 . 168 . 1 . 1
 DNS Server Address: 192 . 168 . 1 . 1
 HTTP Port: 80

SMTP Server Address: _____
 SMTP Port: 25
 SMTP Return Address: _____
 SMTP Host ID: _____
 SMTP Authentication:
 SMTP Username: _____
 SMTP Password: _____ show password

Logging Email Address: _____
 Logging Email Snapshot Interval (Hours): 0
 Logging Email Update Interval (Hours): 0

Email Alarms: Immediately
 Daily
 Daily Alarm Email Time (Hour): 0

Recipient Addresses:
 1: _____
 2: _____
 3: _____
 4: _____
 5: _____
 6: _____
 7: _____
 8: _____

SNMP Manager IP Address: 192 . 168 . 1 . 170
 SNMP Manager Trap Port: 162
 SNMP Read Community: public
 SNMP Write Community: private
 SNMP Enable Traps:

NTP Server Address: pool.ntp.org
 NTP Port: 123
 NTP Update Interval (Minutes): 30
 NTP Enabled:

Site ID: SITE_ID
 Monitor Refresh Time: 1 Seconds
 MTU Size: 1400
 Time Zone Offset from UTC: 0.0 hours
 Hour: _____ Minute: _____ Second: _____
 Set Time: Month: _____ Day: _____ Year: _____
 Time is only saved when "Save Time" is clicked

Enable Event Logging: Logon
 Email
 Reboot
 Alarms Cleared

WEBSITE:

Visit our web site for product updates and additional information.



“Email/Network Setup” Web Page – Device Network Settings

Device Address: Enter a static IP address here. Default: 192.168.1.55

Device Netmask: Enter the Netmask here: Default: 255.255.255.0

Gateway Address: Enter the Gateway IP here: Default: 192.168.1.1

DNS Server IP Address: Enter your DNS address here. Default: 192.168.1.1

HTTP Port: Normally Port 80 Default: 80

“Email/Network Setup” Web Page – SMTP Settings

SMTP Server Address: The user can enter either an IP address in the xxx.xxx.xxx.xxx format or a URI in the form: smtp.comcast.net. In order to resolve the URI, a working DNS server must be present.

SMTP Port: Normally Port 25 or 587. Default: 25

SMTP Return Address: Enter your return email here. If an email cannot be delivered, a message stating why will be sent to this address.

NOTE: The user must enter the following items before an email can be successfully sent: SMTP Server Address, SMTP Port, SMTP Return Address, SMTP Host ID, SMTP username and SMTP password must be supplied if authentication is turned on and Recipient Address 1. The test email is sent to email recipient address 1.

The user must press the “Save Settings” button after entering the SMTP information before attempting an email test. If authentication fails, the email is not sent, please ensure that the username and password are correct.

SMTP Host ID: Enter something here to identify the device.

SMTP Authentication: When checked, Base64 SMTP authentication is used. SSL/TLS is not supported.

SMTP Username: Enter user name here.

SMTP Password: Enter password here.

“Email/Network Setup” Web Page – Email Logging Settings

Logging Email Address: Email address for the “Logging” email recipient (may be different from the 8 “Alarm” Recipient Addresses. Logging emails and Daily emails are sent to this address.

Logging Email Snapshot Interval: The period in hours that a snapshot is taken of the system. The logging email is not sent on this interval.

Logging Email Update Interval: The period in hours that the logging snapshots are emailed. This email may contain multiple snapshots if the Snapshot Interval is less than the Update Interval. Each snapshot will be identified by the date and time.

“Email/Network Setup” Web Page – Email Alarm Settings

Email Alarms: Choose Immediate and/or Daily. If Immediate is selected, then an email will be sent out as soon as an alarm is generated. If Daily is selected, then each alarm is queued and emailed as a digest every 24 hours. The number of queued alarms is displayed on the Monitor/Control page.

Daily Alarm Email Time: The time that queued alarms are sent. Queued alarms are sent to the Logging Email Address only.

“Alarm” Recipient Address: Email addresses for up to 8 addresses. These address correlate to the 8 email addresses selectable on each I/O Device.

“Email/Network Setup” Web Page – SNMP Manager Settings

SNMP Manager IP Address: This is the IP address of the SNMP manager. The system only accepts SNMP requests from this IP address, and will send traps to this IP address only.

SNMP Manager Trap Port: This is the port number that SNMP trap messages will be sent. Default port 162.

SNMP Read Community: This is the community name for Read-Only access.

SNMP Write Community: This is the community name for Read-Write access.

SNMP Enable Traps: When checked, trap messages will be sent. When unchecked, no trap messages will be sent.

NOTE: A cold-start trap will be sent when the unit boots up if the SNMP Enable Traps is checked, otherwise trap messages are sent when a device enters or exits an alarm condition, depending on whether or not alarms are enabled.

WEBSITE:

Visit our web site for product updates and additional information.



“Email/Network Setup” Web Page – NTP Settings

NTP (Time) Server Address: Enter the NTP address here. Default: pool.ntp.org
NTP Port: Normally 123. Default: 123
NTP Update Interval (Min): Interval between timing updates. Default: 30
NTP Enabled: Must be enabled to sync . Default: Enabled

“Email/Network Setup” Web Page – Other Settings

Site ID: This is the Site Identifier that is display on the web ieach email.

Monitor Refresh Time (Sec): Interval at which the Monitor page refreshes. Shorter times may increase network traffic.

MTU Size: The Maximum Transmission Unit (MTU) is the largest physical packet size a network can transmit for TCP and UDP. Enter between 512 and 1400 bytes. The default is 1400 bytes.

Time Zone Offset from UTC: Sets the timezone. Default: -8

Set Time: The hour, minute, second, month, day and year boxes can be used to set the time of the RTC. The time is only updated if you click “Save Time” and not when you “Save Settings”.

Enable Event Logging: Enabling these checkboxes will generate an alarm, but will not send an email. If the system is configured for Daily Alarm emails, then that Daily Alarm email will contain the Event Logging items as well.

Login: Whenever someone logs into the system, the user-name and date/time will be logged.

Email: Whenever an email is sent, the type of email and date/time will be logged.

Reboot: Whenever the device boots, the date/time will be logged.

Alarms Cleared: Whenever the Daily Logs or Normal Alarms are cleared, the type of log cleared and date/time will be stored. When Daily Logs are sent, the Daily Logs are also cleared; this will cause an event log as well.

“Email/Network Setup” Web Page – Controls

Save Settings: After pressing the “Save Settings” button, the device will reboot (If you changed the IP address, you must navigate your web browser to the new IP address (if the HTTP port was changed from port 80, be sure to add the new port number after the IP: xxx.xxx.xxx.xxx:port #). If you didn’t change the IP address, then the web page will return to the login screen after the device reboots.

Reboot Device: When you press the “Reboot Device” button, the device resets, you must navigate your web browser to the new IP address.

Send Test Email: Press this button to send a test email. When the email has Completed, an alert box will pop-up indicating the status of the email and an error condition if the email was not sent correctly. If an email was not sent correctly, please review your SMTP settings and correct as necessary.

NOTE: After you are done making changes to the Email/Network Setup page, you MUST press the “Save Settings” button to save your changes.

Reload Defaults: When you press the “Reload Defaults” button, the device resets, you must navigate your web browser to the new IP address (if the HTTP port was changed from port 80, be sure to add the new port number after the IP: xxx.xxx.xxx.xxx:port #).

Clear Daily Logs: When you press the “Clear Daily Logs” button, the daily logs stored in memory will be cleared. Keep in mind that if the Alarms Cleared Event is enabled, this event will post after the logs are cleared.

Send Daily Logs: When you press the “Send Daily Logs” button, the system will send the daily logs email and clear the log queue.

WEBSITE:

Visit our web site for product updates and additional information.



“Show Alarms” Web Page

Device	Enter/Exit	Date	Time
Station 8 (OFF)	Exit	11/29/2012	15:20:36
Station 1	Exit (MCA)	11/29/2012	15:17:37
Station 8 (ON)	Enter	11/29/2012	15:15:47
Station 1	Exit (MCA)	11/29/2012	15:14:39

Last Updated 11/29/2012 15:20:36

This page displays current alarms.

Device: Displays which device and/or devices triggered the alarm.

Enter/Exit: Displays if the alarm is entering or exiting an alarm condition.

Date: Displays what date the alarm was logged.

Time: Displays what time the alarm was logged.

NOTE: With the “admin” access level, the user may control all functions.

With the “Monitor/Control” or “Monitor” only access level, the user may view the “Show Log”, enable/disable PC speaker sound and silence alarms.

“About” Web Page



The “About” Web Page displays the product name, firmware version numbers, and Broadcast Tools® Web site link.

WEBSITE:

Visit our web site for product updates and additional information.



Dial-Up Operation

For information on setting up the dial-up interface see the “Dial Settings” Setup page.

Using the Dial-Up Interface

When the WVRC-8 Plus is called, it will answer after a user-defined number of rings. When it answers, you will hear the greeting message followed by the alarm message if there is an active alarm. You will then be asked to enter the security access code, which is “123” by default. Once a valid security code is entered “Access Accepted” Message will play and the access LED on the front panel will turn on. The addressed unit will then generate a DTMF “AB” tone which will cause any other units in parallel to hang up and you can begin controlling the device.

When the WVRC-8 Plus dials-out to notify the user of an alarm event it will speak the greeting message followed by the alarm message and security access code prompt. If you wish to acknowledge the alarm press the star (*) key after which you may enter the security access code and control the WVRC-8 Plus or hang-up.

Control Commands

Raise and Lower Relays are controlled by entering the single digit channel number (1-8) of the relay you wish to control followed by * for Lower or # for Raise. To query the new analog (metering) value, press the channel number again.

NOTE: If DIP3 is OFF, the analog (metering) value for the selected channel will be played, and the associated relay message plus “raise” or “lower” will be played after the * or # is released. For more, refer to the table of contents for “Configure DIP Switch Settings.”

Example: To control raise/lower relays 2 after gaining access to the device enter 2 on you keypad, which will select channel 2 and poll analog input 2 then press # to pulse raise relay 2 or press * to pulse lower relay 2.

Poll Silence Sensor Status: 910

Poll Status Inputs: 911 - polls status input 1, 912 - polls status input 2, 918 polls status input 8.

Poll Power Failure Status: 919

Manual Hang-up: 920 will cause the WVRC-8 Plus to hang up.

Poll Analog (metering) inputs: 921 - polls analog (metering) input 1, 922 - polls analog (metering) input 2 928 polls analog (metering) input 8.

Poll temperature probe reading: 929

Audio I/O functions are controlled with the following commands:

- 01 – Local MIC Monitor ON / Feeds the local mic audio to the phone line.
- 02 – Local MIC Monitor OFF / Turns off feed.
- 03 – Telco Caller Audio Output ON / Feeds phone line (CALLER) audio to the (CLR -/+) output terminals.
- 04 – Telco Caller Audio Output OFF / Turns off feed.
- 05 – Telco Send audio input ON / Feeds send (SND -/+) audio to the phone line.
- 06 – Telco Send audio input OFF / Turns off feed.
- 07 – SS monitor audio to telco ON / Feeds Silence Sensor source audio (SS-LT/SS-RT) to the phone line.
- 08 – SS monitor audio to telco OFF / Turns off feed.

Alarm Enable Registers

All of the alarm call-outs can be enabled, disabled or polled remotely using DTMF control. The status alarms can be controlled by entering 97 followed by the status number 1 through 8 and 1 for enable, 0 of disable or 9 for poll.

The analog (metering) alarms can be controlled by entering 98 followed by the analog number 1 through 8, and 1 for enable, 0 for disable or 9 for poll.

Power fail, silence sensor and temperature are controlled with 99 followed by 1 for power fail, 2 for silence sensor and 3 for temperature. 1 to enable, 0 to disable or 9 to poll.

Some examples are listed below:

Enable Status 4 alarm:	9741
Disable Status 4 alarm:	9740
Poll Status 4 alarm enable:	9749
Enable Analog (metering) 5 alarm:	9851
Disable Analog (metering) 5 alarm:	9850
Poll Analog 5 alarm enable:	9859
Enable Power Fail Alarm:	9911
Disable Power Fail alarm:	9910
Poll Power Fail alarm enable:	9919
Enable Silence Sensor Alarm:	9921
Disable Silence Sensor Alarm:	9920
Poll Silence Sensor Alarm enable:	9929
Enable Temperature Sensor Alarm:	9931
Disable Temperature Sensor Alarm:	9930
Poll Temperature Sensor Alarm enable:	9939

WEBSITE:

Visit our web site for product updates and additional information.



Dial-Up Programming

Recording Voice Messages:

The WVRC-8 Plus's dial-up voice system is supplied with spoken words and phrases in English, but the user is free to customize the voice system by recording words and phrases. The following steps are required to record voice messages into the WVRC-8 Plus.

NOTE: If the time allotted for the message you are recording elapses before the "PGM" button is pressed, it will turn off automatically.

- 1 - Connect a touch-tone telephone to either the front or rear panel RJ-11 jacks labeled "PGM".
- 2 - Put the WVRC-8 Plus in to programming mode by pressing the front panel "PGM" button; this should illuminate the front panel "PGM" LED.
- 3 - Enter the two-digit address of the message you wish to program into connected the telephone. A list of available messages and their addresses is provided below.
- 4 - The red "REC" led will illuminate. As soon as it lights, begin speaking the new message into the telephone's mouth piece.
- 5 - When finished, press the PGM button again, the "REC" and the "PGM" LEDs will extinguish.

Example: To record a new greeting message, press the "PGM" button, enter 00 on the keypad, and speak the new greeting message, and then press the "PGM" button again.

NOTE: The instructions above are for recording replacement voice messages. If you want to listen to a message without recording over it, preface the address with the asterisk (*) key.

Example: To hear the current greeting message, press the "PGM" button and Enter *00. The current greeting message will play.

Message	Address	Seconds
Greeting	00	10
Alarm	01	2.6
Normal	02	2.6
Raise	03	2.6
Lower	04	2.6
Access Accepted	05	5
Silence Alarm	06	5
Power Fail Alarm	07	5
High	08	5
Low	09	5
Status Input 1	11	5
Status Input 2	12	5
Status Input 3	13	5
Status Input 4	14	5
Status Input 5	15	5
Status Input 6	16	5
Status Input 7	17	5
Status Input 8	18	5
Analog Input 1	21	5
Analog Input 2	22	5
Analog Input 3	23	5
Analog Input 4	24	5
Analog Input 5	25	5
Analog Input 6	26	5
Analog Input 7	27	5
Analog input 8	28	5
Engineering Unit 1	31	2.6
Engineering Unit 2	32	2.6
Engineering Unit 3	33	2.6
Engineering Unit 4	34	2.6
Engineering Unit 5	35	2.6
Engineering Unit 6	36	2.6
Engineering Unit 7	37	2.6
Engineering Unit 8	38	2.6
Number 0	40	2.6
Number 1	41	2.6
Number 2	42	2.6
Number 3	43	2.6
Number 4	44	2.6
Number 5	45	2.6
Number 6	46	2.6
Number 7	47	2.6
Number 8	48	2.6
Number 9	49	2.6
Relay 1	51	5
Relay 2	52	5
Relay 3	53	5
Relay 4	54	5

WEBSITE:

Visit our web site for product updates and additional information.



Message	Address	Seconds
Relay 5	55	5
Relay 6	56	5
Relay 7	57	5
Relay 8	58	5
Temperature	60	2.6
Degrees Celsius	61	2.6
Degrees Fahrenheit	62	2.6
Minus	63	2.6
Enabled	64	2.6
Disabled	65	2.6
Point	66	2.6
Temperature Alarm	67	2.6
Time	68	2.6
Chassis Temp Alarm	69	2.6
Internet Alarm	70	1.8

CONFIGURE DIP Switch settings:

NOTE: The “UP” position is OFF

DIP 1 - Unused

DIP 2 - OFF = Voice Temperature in Fahrenheit, ON = Celsius.

DIP 3 - If OFF, description messages will be played when controlled via dial-up.
If ON, raise and lower description messages will not be played.

DIP 4 - OFF = Xport control, ON = PC control via DB9.

DIP 5 - OFF = Normal operation, ON = DB9 RS-232 to Xport web server.

DIP 6 - Unused

DIP 7 - Unused

DIP 8 - If OFF, input alarms are active. If ON, alarms will not respond.

Specifications

Ethernet Interface:	RJ-45, 10Base-T or 100Base-TX, auto sensing with Link & activity indicator - Full/half duplex.
Control Logic:	Micro with non-volatile memory and web server.
Temperature Sensor input:	Probe (1 supplied) with 25-foot cable and 1/8" T/R/S plug. -67°F to +257°F (-55°C TO +125°C).
Silence Sensor:	Stereo unbalanced 22K ohm inputs. Input level: -10dBu to +24dBu. Note: Summed to monaural.
Control Relays:	8 SPDT (form C) dry contact relays, 8 SPST (form A) dry contact relays, 30 VDC@1amp.
CAUTION!	For safety, never connect 120 Vac circuits to the above relays!
Metering (analog) inputs:	Eight - Single ended (ground referenced) 0 to 10 VDC input range. 47 K ohm input Z. 10-bit resolution.
Status/Logic inputs:	Eight - Optically Isolated. Internal jumpers for (WET), floating external 5 to 24 VDC or internal 5 VDC source (DRY). Open collector, contact closures to ground or external logic source.
Power Failure input:	Optically-isolated, 5 to 12 VDC @ 10 ma, center positive. 2.1mm x 5.5mm coax type.
Connectors:	Metering (analog), status, relays, telco hybrid audio, and silence sensor audio input: Removable euroblock screw terminals, 2 x 2.1mm x 5.5mm coax type power jacks and one - 1/8" T/R/S mini-jack temp probe.
EMI / FCC Compliance:	See the Declaration of Conformity page. Operation is subject to the following two conditions: 1) This device may not cause harmful interference, and 2) this device must accept any interference received, including that which may cause undesired operation.
Protocols:	TCP/IP, UDP/IP, ARP, ICMP, SNMP, TFTP, Telnet, DHCP, BOOTP, HTTP, and AutoIP.
Required power supply (supplied):	12 Volt DC only @ 2.5 amp. 2.1mm ID x 5.5mm OD coaxial connector, center positive. Surge protected. Universal (90 - 264 vac / 50/60 Hz) with IEC input plug with domestic AC cord.
Size:	19.00" x 6.00" x 1.75", aluminum chassis and steel front panel.
Weight:	2.0 lb.
Options:	* LR-5, 5-pole mechanical latching relay.

WEBSITE:

Visit our web site for product updates and additional information.



SPECIFICATIONS

Declaration of Conformity

The XPORT Device contained in the WVRC-8 Plus conforms to the following standards: (according to ISO/IEC Guide 22 and EN 45014)

Manufacturer's Name & Address:

WVRC-8 Plus:
Broadcast Tools, Inc.
131 State Street.
Sedro Woolley, WA 98284-1503 USA

XPORT:

Lantronix 15353 Barranca Parkway, Irvine, CA 92618 USA
Declares that the following product:

Product Name Model: XPORT™ Device Server

Conforms to the following standards or other normative documents:

Electromagnetic Emissions:

EN55022: 1998 (IEC/CSP1R22: 1993) Radiated RF emissions, 30MHz-1000MHz
Conducted RF Emissions – Telecom Lines – 150KHz - 30MHz
FCC Part 15, Subpart B, Class B
IEC 1000-3-2/A14: 2000
IEC 1000-3-3: 1994

Electromagnetic Immunity:

EN55024: 1998 Information Technology Equipment-Immunity Characteristics
Direct ESD, Contact Discharge
Indirect ESD
Radiated RF Electromagnetic Field Test
Electrical Fast Transient/Burst Immunity
RF Common Mode Conducted Susceptibility
Power Frequency Magnetic Field Test

Manufacturer's Contact:

WVRC-8 Plus.
Broadcast Tools, Inc.
131 State Street
Sedro Woolley, WA 98284-1503 USA
Tel: 360.854.0608 Fax: 866.783.1742

XPORT

Lantronix:
Director of Quality Assurance
15353 Barranca Parkway, Irvine, CA 92618 USA
Tel: 949.453.3990 Fax: 949.453.3995

WEBSITE:

Visit our web site for product updates and additional information.



DECLARATION

LIMITED WARRANTY

The term “Buyer” as used in this document refers to and includes both (but only) (a) any person or entity who acquires such an item for the purpose of resale to others (i.e., a dealer or distributor of an item), and (b) the first person or entity who acquires such an item for such person’s or entity’s own use.

Broadcast Tools warrants to each Buyer of any item manufactured by Broadcast Tools that the item will be free from defects in materials and workmanship at the time it is shipped by Broadcast Tools if the item is properly installed, used and maintained.

EXCLUSIVE REMEDIES

If Broadcast Tools is notified, in writing, of a failure of any item manufactured by Broadcast Tools to conform to the foregoing Limited Warranty within one (1) year following the date of the Buyer’s acquisition of the item, and if the item is returned to Broadcast Tools in accordance with Broadcast Tools’ instructions for confirmation by inspection of the defect (which at Broadcast Tools’ election may include, without limitation, a requirement that the Buyer first obtain a Return Authorization number from Broadcast Tools, that the Buyer furnish proof of purchase in the form of an invoice and/or receipt, and that the Buyer prepay all freight charges associated with any return of the item to Broadcast Tools using such freight service as Broadcast Tools reasonably may specify), Broadcast Tools will repair or replace the defective item, or will refund the purchase price paid by the Buyer for the item. Broadcast Tools shall have the exclusive right to choose between these alternative remedies.

NO OTHER WARRANTIES OR REMEDIES

TO THE MAXIMUM EXTENT PERMITTED BY APPLICABLE LAW, BROADCAST TOOLS AND ITS SUPPLIERS DISCLAIM ALL OTHER WARRANTIES, EITHER EXPRESS OR IMPLIED, INCLUDING BUT NOT LIMITED TO IMPLIED WARRANTIES OF MERCHANTABILITY OR FITNESS FOR A PARTICULAR PURPOSE; AND THE FOREGOING ALTERNATIVE REMEDIES SHALL BE EXCLUSIVE OF ALL OTHER REMEDIES. THIS LIMITED WARRANTY GIVES YOU SPECIFIC LEGAL RIGHTS. YOU MAY HAVE OTHER RIGHTS, WHICH VARY FROM STATE/JURISDICTION TO STATE/JURISDICTION.

NO LIABILITY FOR CONSEQUENTIAL DAMAGES

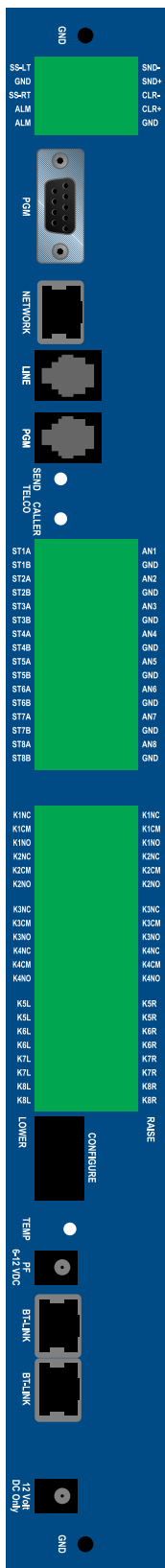
TO THE MAXIMUM EXTENT PERMITTED BY APPLICABLE LAW, NEITHER BROADCAST TOOLS NOR ANY OF ITS SUPPLIERS SHALL HAVE ANY LIABILITY FOR ANY SPECIAL, INCIDENTAL, INDIRECT, CONSEQUENTIAL OR PUNITIVE DAMAGES WHATSOEVER (INCLUDING, WITHOUT LIMITATION, ANY DAMAGES FOR LOST PROFITS, BUSINESS INTERRUPTION, LOSS OF DATA OR INFORMATION, COST OF CAPITAL, CLAIMS OF CUSTOMERS, OR ANY OTHER PECUNIARY LOSS) ARISING OUT OF THE USE OF OR THE INABILITY TO USE ANY ITEM SUPPLIED BY BROADCAST TOOLS, EVEN IF BROADCAST TOOLS HAS BEEN ADVISED OF THE POSSIBILITY OF SUCH DAMAGES HAVE ANY LIABILITY FOR ANY SPECIAL, INCIDENTAL, CONSEQUENTIAL, EXEMPLARY OR PUNITIVE DAMAGES. THIS LIMITATION OF LIABILITY APPLIES WHETHER A CLAIM IS ONE ALLEGING BREACH OF A CONTRACT OR WARRANTY, NEGLIGENCE OR OTHER TORT, FOR THE VIOLATION OF ANY STATUTORY DUTY, THE FAILURE OF ANY LIMITED OR EXCLUSIVE REMEDY TO ACHIEVE ITS ESSENTIAL PURPOSE, OR ANY OTHER CLAIM OF ANY NATURE. BECAUSE SOME STATES AND JURISDICTIONS DO NOT ALLOW THE EXCLUSION OR LIMITATION OF LIABILITY FOR INCIDENTAL OR CONSEQUENTIAL DAMAGES, THIS LIMITATION MAY NOT APPLY TO YOU.

Broadcast Tools, Inc.

131 State Street
Sedro-Woolley, WA 98284 • USA

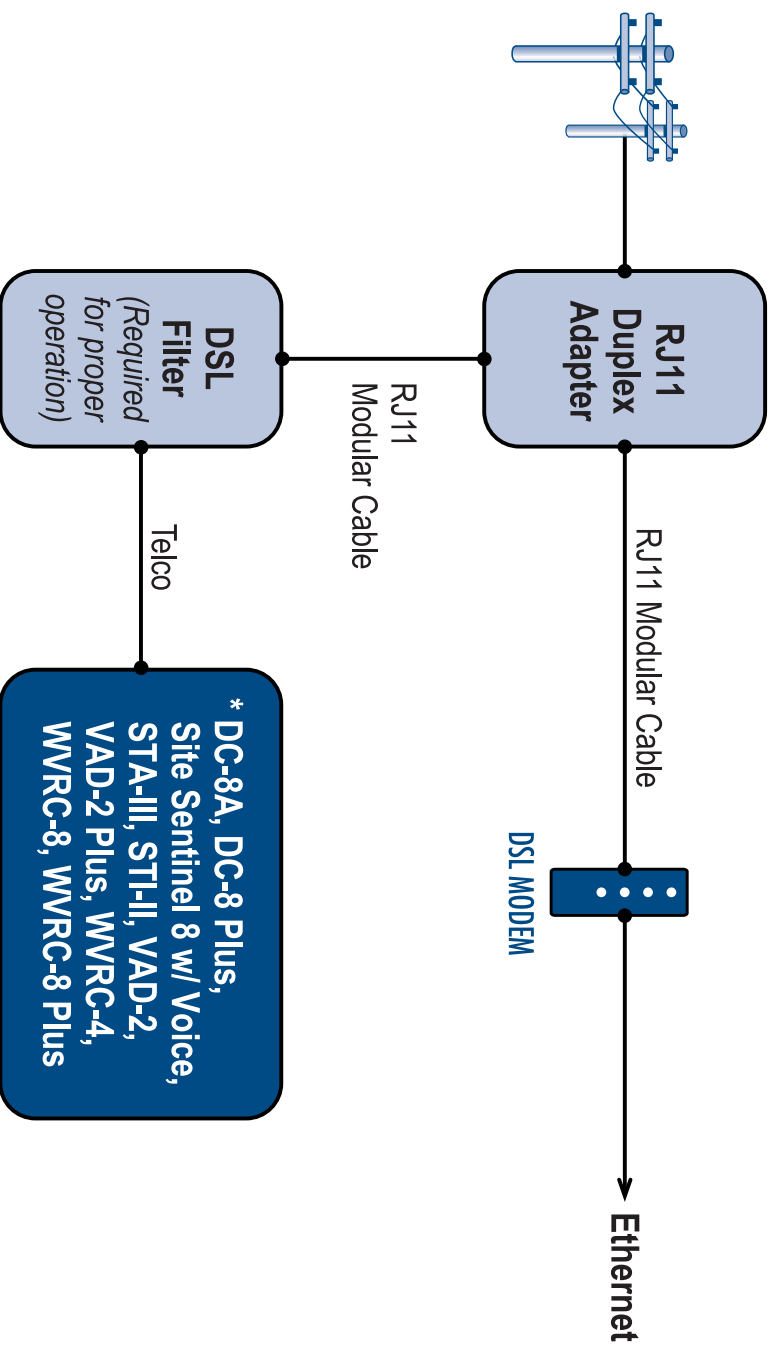
360.854.9559 **voice** • 866.783.1742 **fax**
support@broadcasttools.com **e-mail**
www.broadcasttools.com **website**

Front and Rear Chassis Drawings



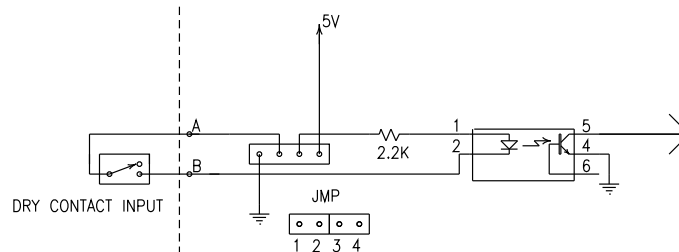
Broadcast Tools®

Connection suggestion when using listed* equipment with DSL/Telco Phone Lines.

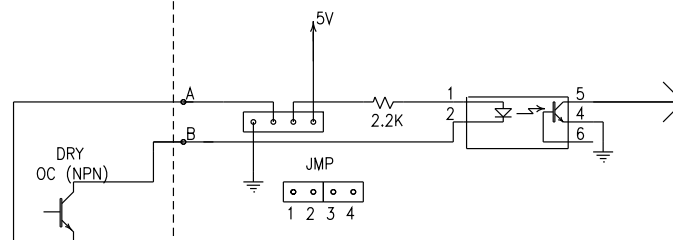


Typical WVRC Product I/O

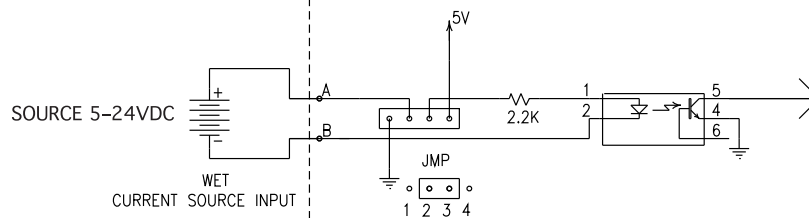
STATUS INPUT "DRY"



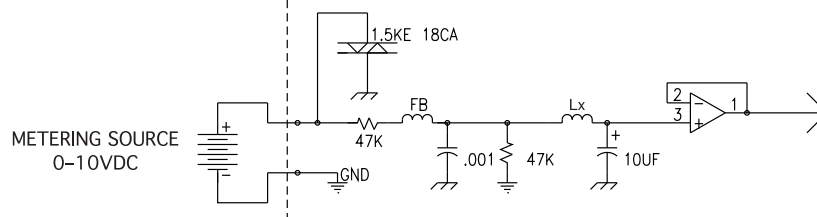
STATUS INPUT "DRY"



STATUS INPUT "WET"



ANALOG INPUT



RELAY OUTPUTS

