

# x-Type Console

## A&E SPECIFICATION

February 2021, V1.0



## 1.0 INTRODUCTION

The new generation of **x-Type** consoles is an ergonomic, highly flexible solution for broadcast control rooms that meets the requirements of Human Factors defined in the international standard ISO11064.

The **x-Type** series is made with contemporary materials of high quality and durability, with an avant-garde finish that mixes technical and timeless colours such as contrasting & contemporary white & black.

Thanks to the various modular components and their rich range of accessories, the **x-Type** series will adapt to future changes in configuration, equipment and operation.

## 2.0 GENERAL DESCRIPTION

**Modular design.** Each console will consist of a series of modular parts with an advanced engineering design to allow custom parts in order to meet the most demanding requirements for 24/7 use in Mission critical control rooms. The Design is considered to grant the maximal ergonomics and comfort to operators, together with a neat integration of cabling and technology, thus ensuring the perfect Human-Machine interaction.

**Stability and rigidity.** To ensure the stability and guarantee of the product during continuous use 24/7, the console structure will be a steel fabrication, and the worktop compact HPL. The stability of the consoles is ensured by lateral feet, made of square tubular metal with a welded bottom plate incorporating cable access and height-adjustable jacks. The tubular section of the legs is 3" x 1", made in one piece, folded and welded from the inside, offering great resistance and an extremely robust aesthetic.

**Cable management.** Neat cable management is considered at different levels for a perfect cable routing, being ready to efficiently separate power & data. From raised floor to worktop all wiring will be protected and safe both vertically and horizontally. Full access to cables is essential in 24/7 operations, therefore the **x-Type** console has a big format top cover and a removable rear panel cover which provides direct access to in the technical duct below worktop and a secure location for integral 4U equipment PODS.

**Equipment storage.** Several storage options are available to guarantee perfect integration of equipment. As standard, the console is ready to host equipment such as KVM, thin clients and other light active devices in 4U equipment PODS and a multifunctional duct under the worktop. The equipment POD is a steel construction fitted with 19" rack mount enabling a maximum of 4U for rack mounting. POD positions are interchangeable with the option of multiple POD's per desk (medium & large desks). The multi-functional duct is designed for cable management, the installation of power distribution units and the storage of small electronic devices. In addition, full access to this multifunctional beam is granted through front and rear structural openings with 3 times 3U on both sides (Total 18U format 19 "). Rack mounting options are standard features of this console. For large format equipment, the range x-Type offers dedicated cabinets for single computer, double computer and 19" mini racks. The area dedicated to active equipment includes passive cooling zones and optionally, active cooling options with low noise fans are available in 110 and 220 volts.

**Work Surface.** High-resistant worktops are made of compact laminate HPL 18 mm thickness, in accordance with standard EN13986. The edges of the work surface will be profiled with a CNC finish without edges. The height of the work surface will be nominally 29" high to comply with ISO11064 and the legroom below will be at least 29.5". Each console includes oblong holes to allow the fixing of the articulated arms of monitors.

**Height Adjustment.** x-Type consoles have been designed to respond to the most exigent ergonomic requirement to improve operator's comfort and alertness status. To this end, x-Type consoles are available as Fixed Height console and as Height Adjustable consoles. The unique design of the x-Type consoles allow to retrofit a fixed height console converting it into a fully height adjustable console. The height adjustment for worktop is considered as a key element to reduce fatigue and increase operation alertness for the operators. In multi-operator installations, a fixed separation distance must be structurally granted for the independent movement of each worktop and the safety of operators. The Height adjustment has a range of 26" – 47", by means of electric actuators with electronic adjustment at 1.5"/s speed. Consoles with height adjustment incorporates as standard supply 2 industrial articulated cable management chains section 2.3" x 3/4" to protect the cabling during continuous movement and operation.

### 3.0 CONSOLE FRAME & FINISHES

Work surface:	Compact Laminate (HPL) 18mm– Royale White (Option light grey)
Rear Shelf:	Compact Laminate (HPL) 12mm– Black (Option dark grey anthracite)
Frame:	Metal black powder coated 2mm Cable duct /1.5mm Modesty panel/ 1,00mm for foldable cover
Legs:	Metal End panels in 3" x 1" square pipe section, welded with leveller basement, powder coated Silver RAL 9006 and glossy black panel
Pods:	4U metal black satin texture powder coated 2mm POD with removable metal white gloss powder coat facia. Vent grills in rear face of POD.

### 4.0 ASSEMBLY

The console system shall be suitable for assembly by local semi-skilled labour using our assembly video & illustrated instructions printed in the English language. Alternatively, Lund Halsey can provide personnel for full installation services or supervised assembly as well.

### 5.0 PACKAGING

All goods will be suitably packed to protect them during domestic or export delivery by air or sea, and appropriate storage on arrival. Component parts shall be individually identified to ease assembly.

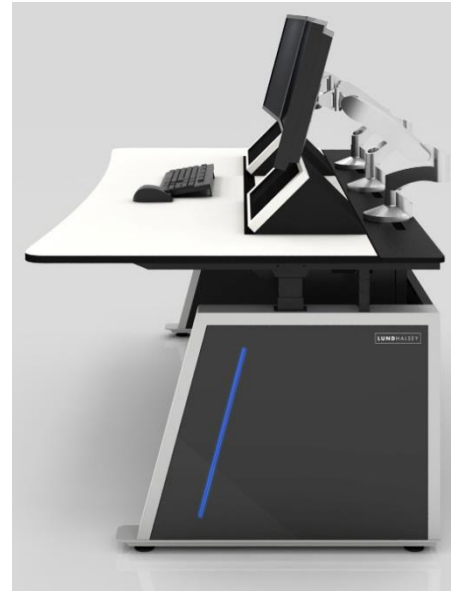
### 6.0 WARRANTY

The manufacturer shall provide a written warranty against defects in workmanship or materials, subject to normal use, for the following periods. Damages arising from inappropriate storage, wrong handling or manipulation during installation are not included.

- Modular steel frames - lifetime warranty
- Custom work surfaces - 10 years
- Custom panels - 10 years
- Monitor arms - 2 years
- Moving parts - 2 years

## 7.0 DRAWINGS & DETAILS

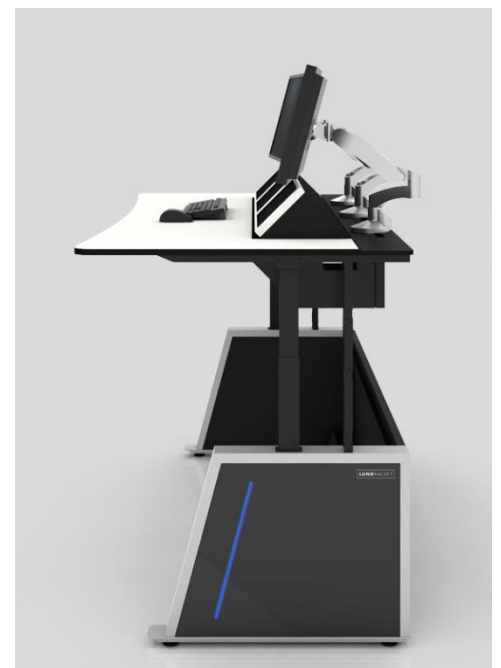
### 7.1 TYPICAL FIXED HEIGHT CONSOLE



### 7.2 TYPICAL SIT/STAND CONSOLE



- Up to **397lbs** Lifting capacity
- Adjustable Height **26" – 47"**
- **PIEZO** anti-collision Safety sensor



### 7.3 TYPICAL CURVED CONSOLE HEIGHT ADJUSTABLE (CENTRAL CABINET)



For Safety reasons, Sit/stand consoles must keep a free safety area between worktops.  
Lund Halsey consoles equipped with PIEZO anti-collision sensor will stop the lifting movement and go back to avoid damages.



## 8.0 GENERAL DESCRIPTION OF ELEMENTS



1. Worksurface High Pressure Compact Laminate 18mm
2. Rear Shelf High Pressure Compact Laminate 12mm
3. Bottom Side-to-Side Cable Duct
4. 4U 19" rack mount equipment wedge
5. Front/Bottom access for 3U 19" Rack space (Up to 9U)
6. Connectivity Base modular configuration (Optional)
7. Modesty Panel
8. Corner LEDs (Optional)
9. Dual-Side Cable Entrance
10. Customizable End Panels



11. Universal fixing rail & Cable Pass Trough for Monitors
12. Protected Cable Management
13. Leveller feet
14. Fixed sit & Height adjustable worktop Options
15. Multipurpose compartment with 3U 19" Rack mount ready for small devices like thin clients, KVM, etc.
16. Foldable cover with ventilation slots
17. Removable service cover
18. RGB+W LED feature light

## 9.0 OPTIONAL ACCESSORIES

### 9.1 ARTICULATED MONITOR ARM & VIDEOWALL SUPPORT



#### MONITOR ARMS

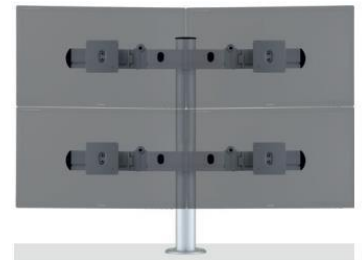
Designed for screens up to 30" / 28lbs

- ❖ Fits screens with VESA mounting patterns 75 x 75mm and 100 x 100mm
- ❖ Concealed cable routing with access cut into console
- ❖ Maximum extension is 23.2"
- ❖ Full motion adjustability

#### VISIONLINE TOTEMS

Multi-screen support Ideal for control, finance & Monitoring systems

- ❖ Height adjustable
- ❖ Quick Release VESA
- ❖ Designed for screens up to 24"/24lbs
- ❖ Lift 15 3/4" / 27.5"
- ❖ Tilt +60° / - 25°
- ❖ Swivel +/-45°
- ❖ VESA 75 x 75 / 100x100



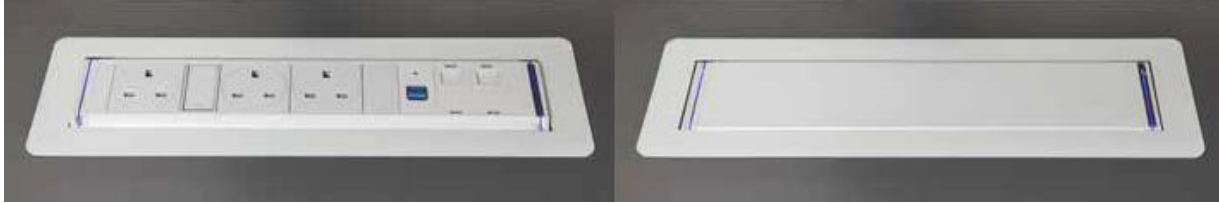
### 9.2 STORAGE OPTIONS

- PC Sling
- PC Cabinet (single & double)
- 19" mini rack
- Custom options and angled cabinets on request





### 9.3 DESKTOP POWER & DATA MODULE



- ❖ Touch controlled electronic operation (manual version also available)
- ❖ Raised above work-surface to reduce ingress from spilt fluids
- ❖ Unique foam mounting & coupler design for quieter operation
- ❖ Additional modules available for data / media / USB etc.

### 9.4 Z-BAR TASK LIGHT

- ❖ Fully adjustable LED head can spin in its socket
- ❖ Sweep from side to side and rotate at the end of the arm to cast light in any desired direction
- ❖ Fully dimmable control gear
- ❖ Slide your finger along the touch strip to dim gradually, or touch anywhere on the strip to jump directly to any brightness, including off



**Important Notice:**

The information contained on the present document is intended to provide a general description of the product. **LUND HALSEY CONSOLES SYSTEMS Ltd.** reserves the right to modify the product without previous notice.

