

SESCOM[®]

The Audio Source.

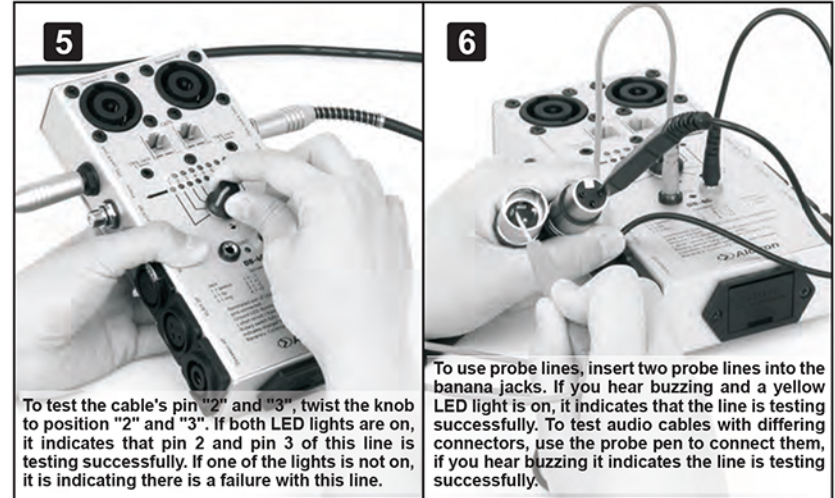
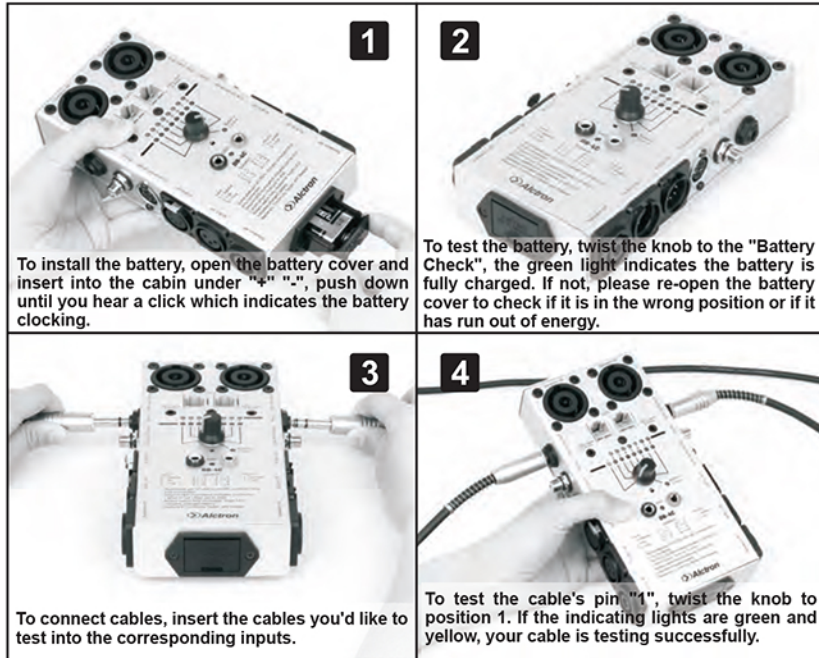
PROFESSIONAL AUDIO CABLE TESTER

The Sescom SES-CT1 is a 9-in-1 professional audio cable tester that allows for quick and convenient testing and diagnosis of up to 9 different cable terminations. Simply connect your cable to the appropriate port and turn the LED-equipped knob to check each pin's connection. The 9V-powered SES-CT1's LEDs confirm each conductor's continuity and connection as well as its ground. Assembled in a heavy-duty metal box and includes a pair of test probes & 9V battery.

FEATURES

- 9-in-1 Audio Cable Tester
- Allows for Quick and Convenient Testing for Many Types of Cables
- 9-Way Switch for Selecting Connections and Battery Check
- Ground Connection Status Checker
- LEDs to Confirm Each Conductor's Continuity and Connection
- Heavy Duty Metal Construction
- Includes a Pair of Test Probes & 9V Battery

INSTRUCTIONS



SPECIFICATIONS

- Tests:
 - SpeakON: 4-Pole & 8-Pole, 1/8": TRS Mini Stereo 3.5mm Jacks
 - 1/4": TRS Stereo 6.35mm Jacks, CAT5, Phono/RCA
 - DIN: 3-Pin/5-Pin/7-Pin/8-Pin, XLR Male & Female 5-Pin & 3-Pin
- Dimensions (LxWxH): 7.31 x 3.46 x 2.40"
- Weight: 1.81 lbs (823 grams)

SERVICE

If your product needs servicing, follow these instructions:

Contact us if your unit is not working properly.
Reach us at sales@sescom.com or by phone at 845-246-1915

Copyright © Sescom. All rights reserved. Specifications and appearance subject to change without notice.

SESCOM
Phone: 845-246-1915
Email: sales@sescom.com
PO Box 720
Mount Marion, NY 12456
www.sescom.com