

LUM-181G

18.5" 4K/UHD Ready HDR
LCD Monitor



TVlogic[®] Always ON-AIR

LUM-181G

18.5" 4K/UHD Monitoring Solution with Professional Features and Affordable Price

The LUM-181G utilizes a practical combination of the Full HD display and the various 4K interfaces such as 12G-SDI Single Link, 3G-SDI Quad-Link, HDMI 2.0. The LUM-181G delivers the precise color reproduction by adopting TLogic's new color engine and new calibration software. The LUM-181G allows for the HDR monitoring at the peak luminance 500nits and provides a bunch of video signal analysis functions, the portable and rugged housing, which make it ideal for use in studios and OB trucks as well as on location.

Why LUM-181G?



Precise Color Reproduction

New Color Engine 'LogiColor',
& New Calibration Software
'LogiCAL' applied



Versatile Interface

12G-SDI Single Link 4K
3G-SDI Quad Link 4K
HDMI 4K



Professional Features

Various video signal
monitoring and
analysis functions



Easy & Simple

Various OSD key buttons
and Input Signal Indicator
on the front panel

Full HD

Full HD

4K/UHD(2160p) signals
can be displayed on the
1920x1080 resolution panel

LUM-181G



HDR Monitoring

The LUM-181G provides High Dynamic Range mode which allows for monitoring black and highlights on the screen at the same time. The LUM-181G supports PQ and HLG as HDR EOTF gamma.



Optimum Color Settings

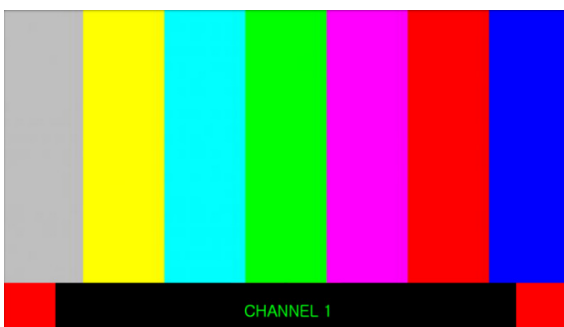
If you select the desired color standard among HD, UHD, DCI-P3, PQ, Dolby PQ, HLG, the pre-set values for each parameter are automatically applied to display the image in the optimum quality.



UMD Display

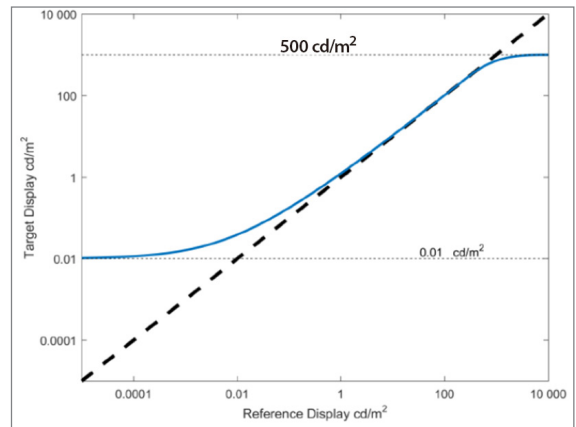
Displays user customized characters or source ID or Tally signal of Ancillary(ANC) data.

- [UMD] mode : Displays user customized 8 characters.
- [ANC] mode : Displays characters embedded in SDI signal.
- UMD Character Color: Red, Green, Blue, Yellow, Cyan, Magenta, White
- UMD Size: Small, Large



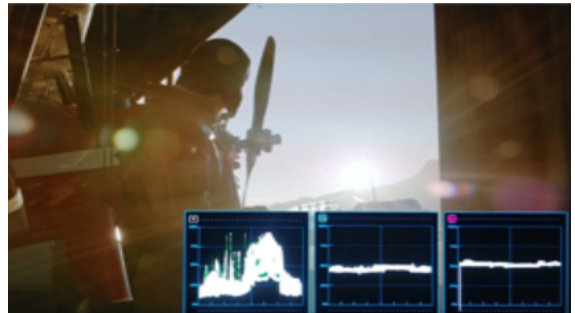
EETF (Electrical-Electrical Transfer Function)

This function provides a toe and knee to gracefully roll off the highlights and shadows providing a balance between preserving the artistic intent and maintaining details.



Waveform

The LUM-181G supports the various modes of Waveform monitor.

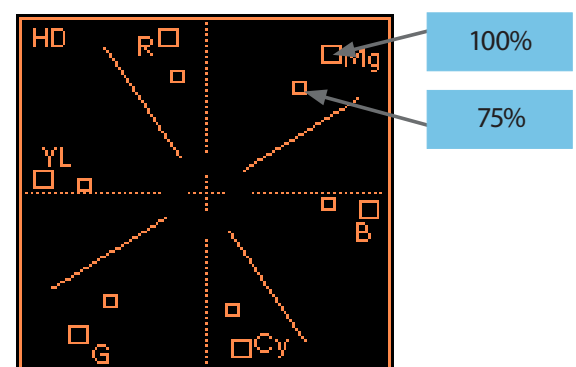
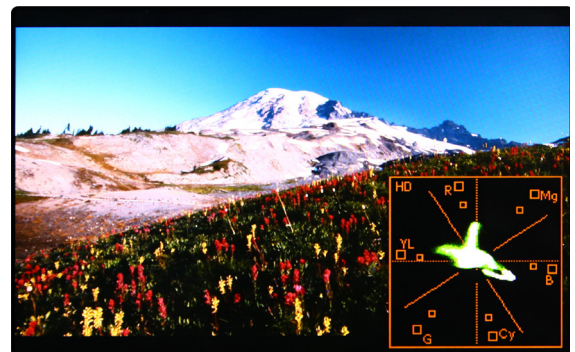


VectorScope

This function displays the color components 'B-Y' and 'R-Y' of the input signals onto X-Y axis.

Two different types of VectorScopes are displayed according to SD or HD input signals.

100% and 75% scales are indicated on the VectorScope.

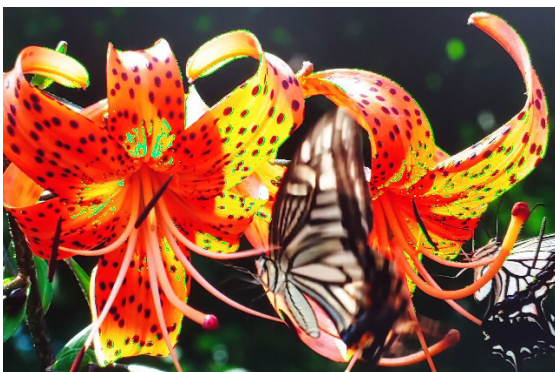


Gamut Warning

When using the monitor in HDR mode of BT.2020 color space, colors that are outside of the monitor's color gamut may be mapped onto the surface of the supported color scope with reduced saturation /brightness, while preserving the same color hue. Gamut warning function will show these mapped colors.



<Gamut Warning - Off>

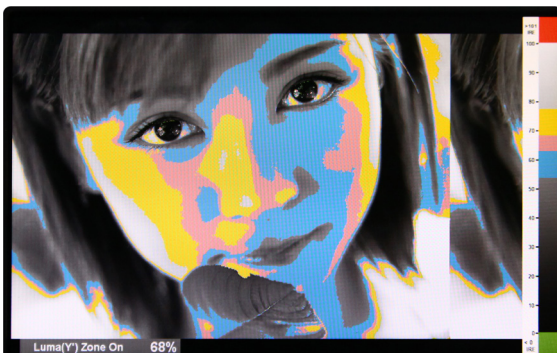


<Gamut Warning - On>

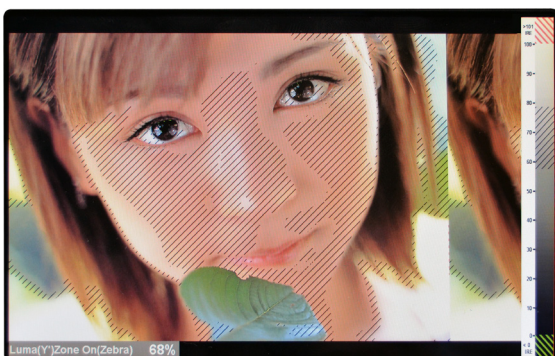
Luma(Y') Zone Check

Analyzes the Luma(Y') level of the input image and displays the selected zone on the screen.

After each pixel's Y' level is analyzed, it is displayed as a certain color or zebra pattern according to the Index on the right side of the screen.



<Luma Zone Check - ON / Color Pattern Type>



<Luma Zone Check - ON / Zebra Pattern Type>

Focus Assist

Focus Assist function assigns a color to the pixels in the shape or boundary area of the image to inform the user to make the best focus. With this function, user can easily differentiate the focused area from out-focused area especially shooting with shallow depth of field.



<Focus Assist - Color mode>



<Focus Assist - Mono mode>

Audio Level Meter

Displays the level of the embedded audio signal together with the video signal input through SDI and HDMI. Up to 16 channels are supported for SDI and 2 channels for HDMI.

Various modes of Level Meter helps the user with the convenient audio monitoring.

- Level Meter channel number(16ch, 8ch) adjustable
- Level Meter grouping available
- Audio channel Pair or Group selectable
- Level Meter size(Small, Nomal, Large) changeable



<Audio Level Meter - SDI 16Ch>

Range Error

Analyzes the input signal's Luma(Y') and chroma information(C') and if the input signal exceeds the designated minimum value and maximum value, the pixel shall blink. This function is to help the user to easily find out any unwanted level of signals and for better exposure setting.



<Range Error - OFF>



<Range Error - ON>

TimeCode Display

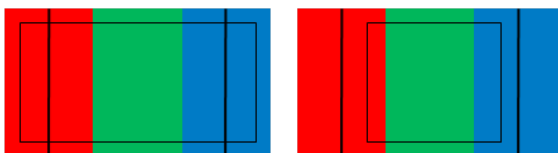
Displays the Timecode information on the screen. Supporting mode is [VITC] and [LTC].



<TimeCode - ON>

Marker

The LUM-181G has the various marker modes which allow the user to adjust Marker type, Center Marker, Safety Area, Fit Marker, Marker Mat, Marker Color, Marker Thickness, etc.



- MARKER : 4:3
- SAFETY AREA : 90%
- FIT MARKER : OFF
- MARKER : 4:3
- SAFETY AREA : 90%
- FIT MARKER : ON

Blue Only / Mono

Red and Green channels are not used and only Blue or Monochrome channel is used to display the screen.

This function is used to adjust the color tones (tones and saturation) of the screen using the SMPTE Color Bar. For example, after displaying the Blue channel, adjust the Color (or Saturation) and Tint (or Hue) so that the original Magenta and Cyan are of the same brightness, and the original Gray and Blue are of the same brightness.



<Blue Only / Mono>

Closed Caption

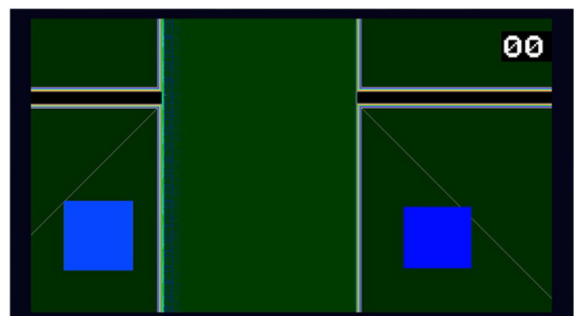
When this function is set on, the monitor displays both speech and non-speech elements in the videos. (e.g. coughs, music, door slams, thunderstorm, dog barking, etc.) CC608(ANC), CC608(LINE21), CC708 are supported.



<Closed Caption - On>

H/V Delay

This function allows the user to check the blanking area and synchronize signals by displaying the horizontal and vertical intervals in the center of the screen.

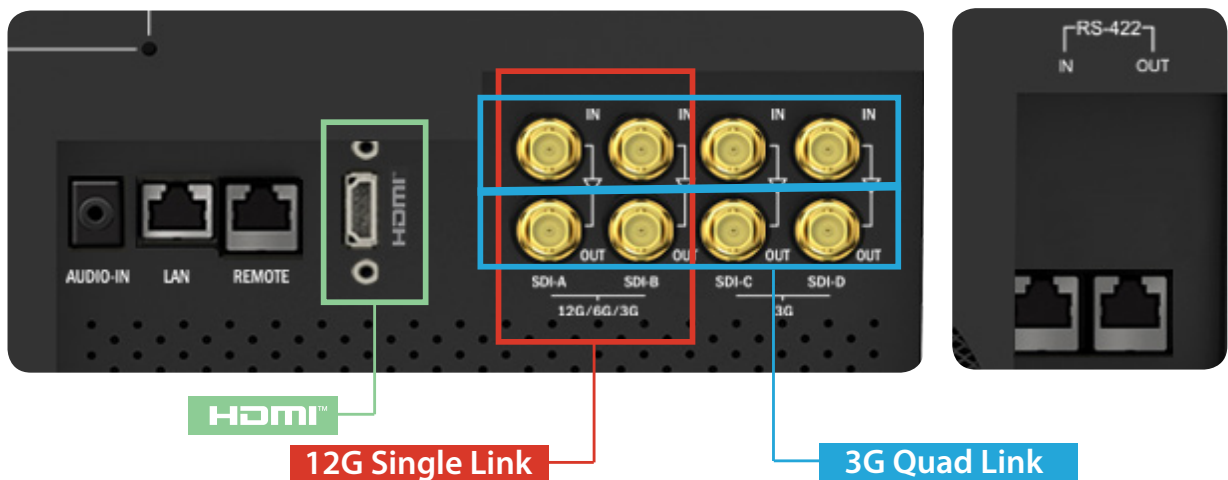


<H/V Delay - ON>

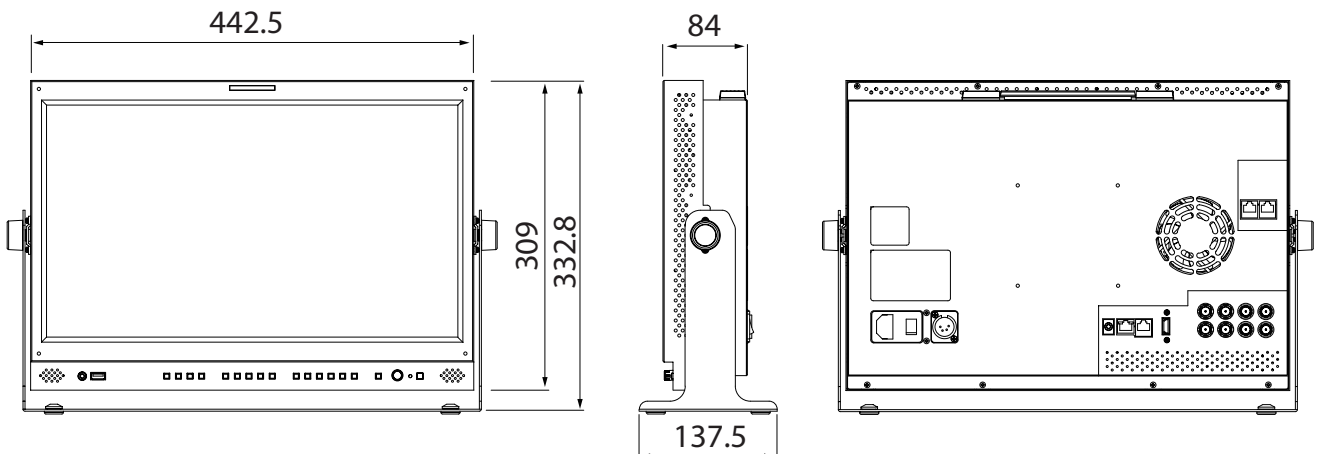
Product Highlights

- 18.5" Full HD Resolution (1920 x 1080)
- Peak Luminance 500nits
- 16.7 Million Colors (True 8bit)
- HDR Emulation
- 12G-SDI Single Link 4K Input & Output
- 3G-SDI Quad-Link Square Division 4K Input & Output
- 3G-SDI Quad-Link 2-S.I. 4K Input & Output
- HDMI 2.0 4K Input
- EOTF/Gamma: 2.2, 2.4, 2.6, 2.8, BT.1886, PQ, HLG
- EETF (Electrical-Electrical Transfer Function)
- Color Gamut: BT.709, BT.2020, DCI-P3, SGamut3
- Color Temperature: D60, D65, D93, User
- Gain & Bias Adjustment
- Video Range Adjustment
- Waveform
- Vectorscope
- 16ch Audio Level Meter
- Gamut Warning
- Focus Assist
- Various Marker
- Timecode Display
- UMD Display
- H/V Delay
- Blue/Mono Only
- Various Aspect
- Luma(Y') Zone Check
- Range Error
- Closed Caption (CC-608, CC-708)
- Internal Pattern Display
- Key Lock
- Key LED On & Off
- Remote Control via LAN(RJ-45) and RS-422(RJ-45)
- GPI Control via REMOTE port
- Firmware Update & Calibration via USB(A Type)
- Rack Mountable in the standard 19" rack

Input & Output



Dimensions



Specifications		LUM-181G
LCD	Size	18.5"
	Resolution	1920 x 1080 (16:9)
	Pixel Pitch	0.213(H) x 0.213(V) mm
	Color Depth	16.7M Colors (True 8 bit)
	Viewing Angle	178°(H) / 178°(V)
	Luminance of white	500cd/m2
	Contrast Ratio	1000 : 1
	Display Area	408.96(H) x 230.04(V) mm
Input	4 x BNC	12G/6G/3G/HD-SDI A/B, 3G/HD-SDI C/D Channel Input
	1 x HDMI	HDMI Input
Output	4 x BNC	12G/6G/3G/HD-SDI A/B, 3G/HD-SDI C/D Channel (Through Out)
Input Signal	12G-SDI	12Gb/s
	6G-SDI	6Gb/s
	3G-SDI	2.970Gb/s
	HD-SDI	1.485Gb/s
	HDMI	480p/720p/1080p/2160p
SDI Input Signal Formats	SMPTE ST 2082	3840x2160 (60/50/30/25/24p)
	SMPTE ST 2081	3840x2160 (30/25/24p)
	SMPTE ST 2036-1:2009	3840x2160(23.98/24/25/29.97/30/50/59.94/60p)
	SMPTE-425M-A/B	1080p(60/59.94/50/30/29.97/25/24/23.98/30sF/29.97sF/25sF/24sF/23.98sF)
		1080i(60/59.94/50)
	SMPTE-274M	1080i (60/59.94/50)
		1080p (30/29.97/25/24/24sF/23.98/23.98sF)
	SMPTE-296M	720p (60/59.94/50)
	SMPTE-260M	1035i (60/59.94)
	SMPTE-125M	480i (59.94)
ITU-R BT.656	576i (50)	
SMPTE ST 2048-2:2011	2048x1080(23.98/24/25/29.97/30p/psf, 47.95/48/50/59.94/60p)	
Remote Control & Update	1 x LAN	RJ-45 Input, Control by TVLogic Protocol
	1 x REMOTE	RJ-45 Input, GPI Control
	2 x RS-422	RJ-45 Input & Output, Control by TVLogic Protocol
	1 x USB	USB A type, Firmware Upgrade
Audio In		Embedded Audio / Analog Stereo (Phone Jack)
Audio Out		Internal Speaker (Stereo) / Analog Stereo (Phone Jack)
Power		DC 12V/24V, AC100~240V(50~60Hz)
Power Consumption (Approx.)		TBD
Operating Temperature		0°C to 35°C (32°F to 95°F)
Storage Temperature		-20°C to 60°C (-4°F to 140°F)
Dimensions	Main Body	442.5 x 309.0 x 84.0mm / 17.42 x 12.16 x 3.30 inch
	With Stand	489.3 x 332.8 x 137.5 mm / 19.26 x 13.10 x 5.41 inch
	Shipping Box	555 x 450 x 280 mm / 21.85 x 17.71 x 11.02 inch
Weight (with stand)		6.52kg / 14.37lbs
Basic Accessories		AC Power Cord, Stand, Control Knob Cap, Handle
Optional Accessories		Acrylic Filter, V-Mount, G-Mount, Carrying Case, Rack Mount Kit, Sun Hood

*The specifications above may be changed without notice.



TVlogic[®] Always ON-AIR

Vidente Co., Ltd. www.tvlogic.tv  [tvlogic_official](https://www.instagram.com/tvlogic_official)

12F, ACE HIGH-END TOWER 8, 84, Gasan digital 1-ro, Geumcheon-gu, Seoul, 08590, Korea

Tel. +82-70-8668-6611 Fax. +82-2-6123-3201

E-mail. sales@tvlogic.co.kr